

Dedicated Single Axis Robot Position Controllers

Compact, Multiple Functionality and High Performance



See notes on CE Marking. P.456

For Stepping Motor



Controller Unit price

Part Number	I/O Module	Unit Price		
		1 pc.	2 ~ 3 pcs.	4 ~ 5 pcs.
EXRS-C1	NPN:N			
	PNP:P			
	CC-Link:C			
	DeviceNet:D			

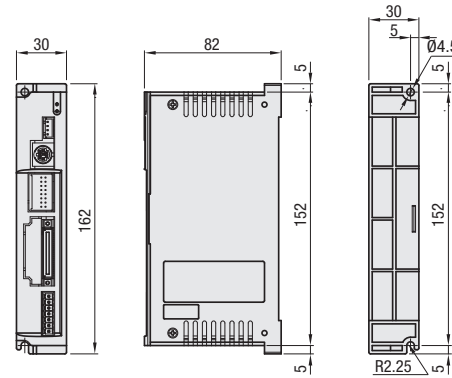
For orders larger than indicated quantity, please request a quotation.



Ordering Example
Part Number - I/O Module
EXRS-C1 - N

Controlled Actuator

RS 1/2/3
RS 1C/2C/3C
RSD 1/2/3
RSDG 1/2/3



Notes

- External power source DC24V (3A or more) is to be provided by customers.
- I/O cable is not provided. Select as an optional product.
- An external E-Stop circuit is required for service use.
- No need to separately select a controller as controller is included in the purchase of a complete set of Single Axis Robots.
- When purchasing a controller as a single item, the part number of the applicable single axis robot is required.
- The Support Software is required in order to change controller/robot combinations, or address changes due to CC-Link configuration changes.
- No auxiliary power supply available.

For Servo Motor



Controller Unit price

Part Number	I/O Module	Unit Price		
		1 pc.	2 ~ 3 pcs.	4 ~ 5 pcs.
EXRS-C22A	NPN:N			
	PNP:P			
	CC-Link:C			
	DeviceNet:D			
EXRS-C22B	NPN:N			
	PNP:P			
	CC-Link:C			
	DeviceNet:D			

For orders larger than indicated quantity, please request a quotation.



Ordering Example
Part Number - I/O Module
EXRS-C22A - N

Controlled Actuator

RSH 1/2/3/4/5
RSH 1C/2C/3C
RSF4
RSB 1/2

Notes

- External power source DC24V (3A or more) is to be provided by customers. Required power supplies for brake and I/O communication.
- I/O cable is not provided. Select as an optional product.
- An external E-Stop circuit is required for service use.
- No need to separately select a controller as controller is included in the purchase of a complete set of Single Axis Robots.
- When purchasing a controller as a single item, the part number of the applicable single axis robot is required.
- The Support Software is required in order to change controller/robot combinations, or address changes due to CC-Link configuration changes.
- No auxiliary power supply available.

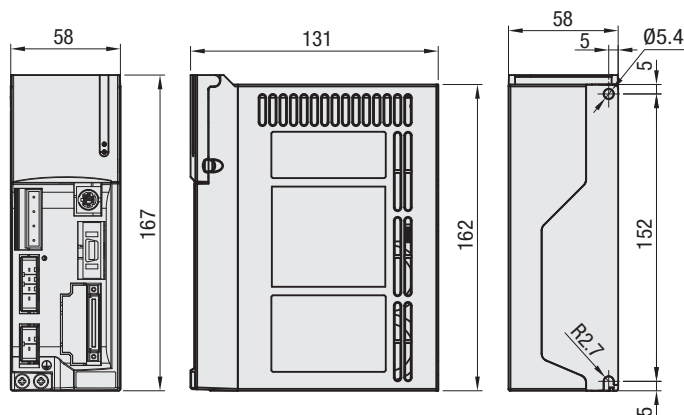


Table of EXT connector signal for EXRS-C21/C22 controller

Connectors attached to controllers. Emergency stop circuit structure and Socket for brake power supply.

Pin No.	Signal Name	Description
1	+V24	Mechanical Brake Power Input (DC power source is to be provided by customers)
2	0V	(DC power source is to be provided by customers)
3	ES+	Emergency Stop Input Internal Power Supply
4	ES1	Emergency Stop Input 1
5	ES2	Emergency Stop Input 2
6	ES-	Emergency Stop Ready
7	MPRDY1	Main Power Supply Ready Output Contacts (DC24V power source is to be provided by customers)
8	MPRDY2	(DC24V power source is to be provided by customers)

I/O Module

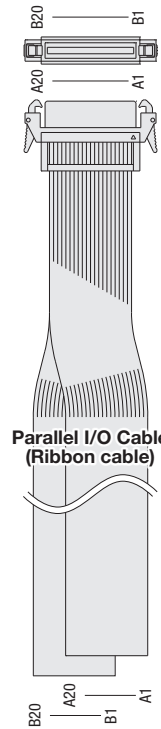
Select from the four types matching to the specifications of PLC. (Common specifications of EXRS-C1 and EXRS-C2)

Type	Descriptions
NPN (Parallel I/O)	16 Inputs (External DC24V±10%, 4mA drain/1 point/+Common) 16 Outputs (External DC24V±10%, 50mA/1 point, 0.4A max. / 8 points, Sinking)
PNP (Parallel I/O)	16 Inputs (External DC24V±10%, 4mA /-Common) 16 Outputs (External DC24V±10%, 50mA/1 point, 0.4A max. / 8 points, Sourcing)
CC-LINK	CC-Link applicable to Ver1.10, Remote Device Station (1)
DeviceNet	DeviceNet Slave 1 Node (PLC settings file is available on MITSUBISHI's website)

Parallel I/O Control Signal Function Descriptions

Type	Pin No.	Signal Name	Meaning	Description	
Input	A1&A2	+COM	I/O Power Supply Input +Common (24V)	External Power Supply (+) Terminal DC24±10%	
	A3&A4	NC	Not Connected	Not used.	
	A5~A12	PI NO-7	Point No. Set (Binary)	Specify the point No. of the set target position Specify point No. for current position input (in manual operation mode).	
	A13	JOG+	Jog Operation (+)	Inching/Jog moves in + direction (in manual mode)	
	A14	JOG-	Jog Operation (-)	Inching/Jog moves in - direction (in manual mode)	
	A15	MANUAL	Manual Mode	Switch to Manual Mode	
	A16	ORG	Return to Home	Start Homing	
	A17	/LOCK	Interlock	External input is allowed. When set to OFF during movement, deceleration is stopped.	
	A18	START	Start Operation	Starts positioning operation towards specified point No.	
	Output	A19	RESET	Reset	Reset Alarm Reset Point No. Output Clear remaining travel distance in relative positioning operation
		A20	SERVO	Servo ON	Motor ON/OFF
		B1~B8	POUT0-7	Output Point No. (Binary)	Outputs point number to be specified by positioning operation Outputs alarm No. in the event of alarm occurrence (Enable/Disable setting is available)
		B9	OUT0	Control Output 0	Arbitrarily allocate from the following depending on the "Parameter settings". Zone Output, Individual Zone Output, Manual Mode Status, Completion of Homing,
		B10	OUT1	Control Output 1	
		B11	OUT2	Control Output 2	
		B12	OUT3	Control Output 3	@Hard Stop, Alarm Output, Proximity Output, In Motion
		B13	BUSY	In Operation	ON in operation
		B14	END	Completion of Operation	Sets the Operation result to ON through Output, upon successful completion.
B15		/ALM	Alarm	ON in normal status, OFF output in the event of alarm status	
B16		SRV-S	Servo Status	Set to ON at the time of power is supplied to the motor.	
B17~B18		NC	Not Connected	Not used.	
B19~B20	-COM	I/O Power Supply Input -Common (0V)	External power supply (-) terminal Inputs to External 0V terminal.		

Controller side Socket



Upstream Controller side cut off cable

Communication Specifications

CC-Link Network Board Specification

Item	CC-Link Network Specification
Communication Protocol	CC-Link V1.10
Station	Remote Device Station
Number of Stations Occupied	1 Station
Station Number Setting	1-64
Communication Speed Setting	156Kbps 625Kbps 2.5Mbps 5Mbps 10Mbps
Total Extended Distance	1200m 900m 400m 160m 100m
Monitor LED	RUN, ERR, SD, RD

DeviceNet Network Board Specification

Item	DeviceNet Network Specification
Compatible DeviceNet Specification	Volume 1 Release2.0/Volume 2 Release2.0
Device Type	Generic Device
MAC ID Setting	0-63
Communication Speed Setting	125Kbps 250Kbps 500Kbps
Total Extended Distance	500m 250m 100m
Monitor LED	Module, Network

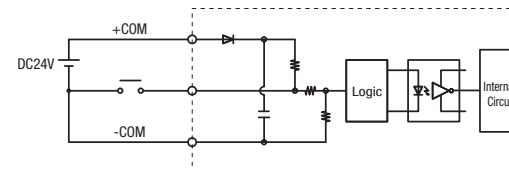
Standard COM1 port communication specifications (RS232C)

Item	Specifications
Transmission Rate	38400bps
Data Bit Length	8 bits
Stop Bit Length	1 bit
Parity	Odd
Flow control	Not provided
Communication Method	Full-duplex Communications

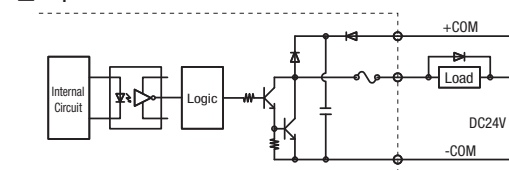
I/O Circuit Diagram

NPN Specifications

Input Area

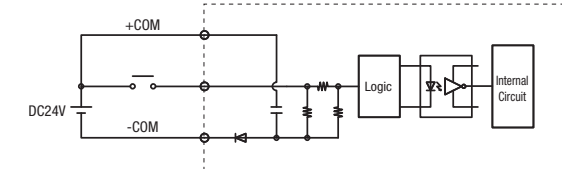


Output Area



PNP Specifications

Input Area



Output Area

