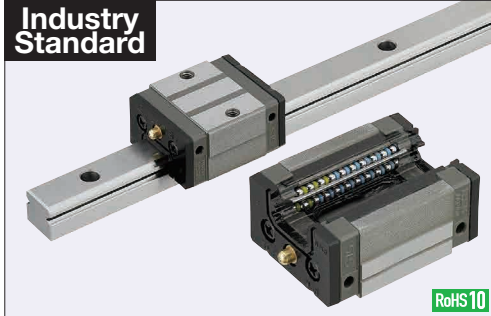


# Linear Guides for Medium Load - Stainless Steel

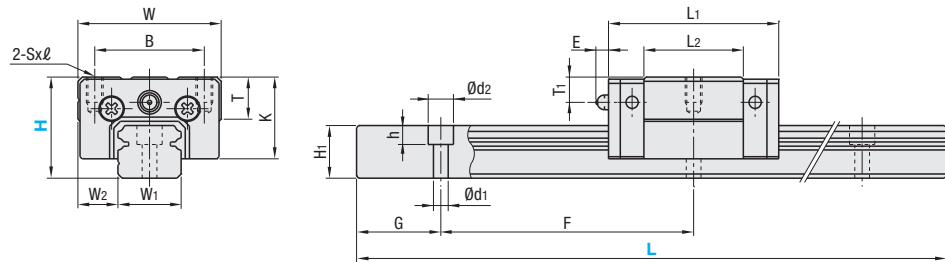
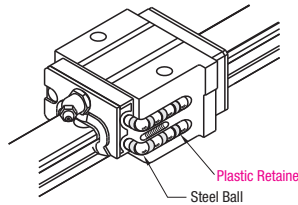
## With Plastic Retainers, Interchangeable, Light Preload

**Features:** Linear Guides with Plastic Retainers prevent contact between balls and result in low noise levels under high-speed operation.



Material Hardness	Type		Block	Rail	L Dimension
	1 block	2 blocks			
Stainless Steel (EN 1.4125 Equiv.) 57HRC~	SSVRZ	SSV2RZ	SSVRB	SSRZL	Selectable
	SSVRLZ	SSV2RLZ		SSRZLF	Configurable

Heat Resistant Temperature: 0 ~ 50°C



For L Configurable, G dimensions differ from those shown in the table below. For details, see P. 531.

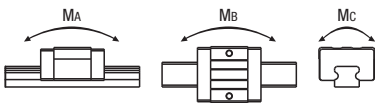
- Precautions for Use**
  - Blocks are equipped with retainers to prevent balls from falling off. For how to handle the blocks, see P. 525.
  - For interchangeable, Light Preload Type, rails and blocks can be interchanged.
  - Straight grooves are provided on datum planes. Be sure to match the datum lines when using.
  - Rails cannot be connected end to end.
  - The accuracy of Linear Guides is guaranteed after mounting the rail (after fastening screws on the rail and pushing it onto the datum plane).
  - Minor bending of the rail will be adjusted after being mounted and will not affect the performance.
- Others**
  - Filled with Lithium soap based grease (Alvania Grease S2 by Showa Shell Sekiyu K.K.).
  - Grease Fittings: Straight Type for H24 and Angled Type for H28 and H33.
  - Grease Fitting is screw-in type, and thus, can be repositioned.
  - For Operating Life Calculation, see P. 527.
  - For operating life calculations, use our free calculation software from [http://download.misumi.jp/mol/fa\\_soft.html](http://download.misumi.jp/mol/fa_soft.html).

Part Number		H	L	Block Dimension							Guide Rail Dimension								
Type				W	L1	B	Sxℓ	L2	K	T	Grease Fitting			H1	W1	W2	Counterbored Hole	F	G
1 block	2 blocks								Mounting Hole	E	T1				d1×d2×h				
SSVRZ	SSV2RZ	24	100~1480 (160)	34	40.4	26	M4x6	23.6	19.4	10	Ø3	3	6	12.5	15	9.5	3.5x6x4.5	60	20
SSVRLZ	SSV2RLZ	28	160~1480 (220)	42	47.2	32	M5x7	30	22	12	M6xP0.75	11	5.5	15.5	20	11	6x9.5x8.5	60	20
(Block)	(Rail)	33	160~1480 (220)	48	59.6	35	M6x9	38	26	12	M6xP0.75	11	7	18	23	12.5	7x11x9	60	20
SSVRB	SSRZL																		
	SSRZLF																		

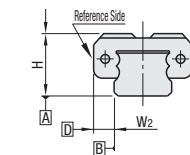
L Dimension: Dimensions in ( ) are for 2-Block Type.

kgf=Nx0.101972

H	Basic Load Rating		Allowable Static Moment			Mass	
	C (Dynamic) kN	Co (Static) kN	MA N·m	Mb N·m	Mc N·m	Block kg	Guide Rail kg/m
24	4.9	7.8	21	18	39	0.14	1.4
28	7.25	11.8	40	34	80	0.19	2.3
33	12.7	20.8	96	81	164	0.34	3.1



### Preload and Accuracy Standards



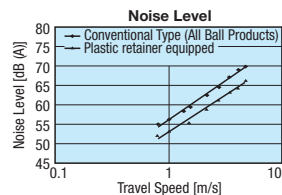
### Interchangeable, Light Preload Type

Radial Clearance (µm)	
H24, 28	-4~0
H33	-5~0

Dimensional Accuracy (µm)	Interchangeable
Height H Tolerance	±20
Pair Variation of Height H	15
Width W2 Tolerance	±30
Pair Variation of Width W2	25
Running Parallelism of Plane C against Plane A	
Running Parallelism of Plane D against Plane B	

See P. 525

### Features of Plastic Retainers: Low noise levels and improved sound quality



- Lack of mutual contact between balls results in low noise levels and improved sound quality.
- Since there is no mutual contact abrasion between the balls, particle generation is less than those of conventional products.

H	Selectable L	Unit Price			
		Set	Rail	Block	
		SSVRZ	SSV2RZ	SSRZL	SSVRB
24	100				
	160				
	220				
	280				
	340				
	400				
	460				
	520				
	580				
	640				
	700				
	760				
	820				
	880				
	940				
	1000				
1060					
1120					
1180					
1240					
1300					
1360					
1420					
1480					
28	160				
	220				
	280				
	340				
	400				
	460				
	520				
	580				
	640				
	700				
	760				
	820				
	880				
	940				
	1000				
	1060				
1120					
1180					
1240					
1300					
1360					
1420					
1480					
33	160				
	220				
	280				
	340				
	400				
	460				
	520				
	580				
	640				
	700				
	760				
	820				
	880				
	940				
	1000				
	1060				
1120					
1180					
1240					
1300					
1360					
1420					
1480					

### L Dimension Configurable Type (1mm Increment)

H	Unit Price		
	Set	Rails	
	SSVRLZ	SSV2RLZ	SSRZLF
24			
28			
33			

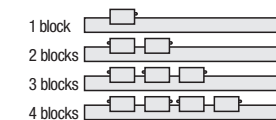
For calculation of L Dimension Configurable Type (1mm Increment), add the above amount to the unit price of the Selectable Type longer than, and closest to this L Dimension Configurable Type.

Ordering Example: Part Number - L  
SSVRZ28 - 640

Alterations Example: Part Number - L - (RLC, LLC...etc.)  
SSVRZ28 - 640 - RLC

Alterations	Code	Spec.
Rail End Cut	LLC	Cuts rail ends. Ordering Code: LLC
Left End Cut	LLC	H L Cut N 24 10 10 28 33
Right End Cut	RLC	Applicable to Selectable Type only. Overall length will be shorter by cutting.
3-Block Specifications	B3	Add 2 blocks to 1-Block product to ship as 3-Block separate item. Selection Example: SSVRZ24-400-B3
4-Block Specifications	B4	Add 3 blocks to 1-Block product to ship as 4-Block separate item. Selection Example: SSVRZ24-400-B4

### Position of Grease Fitting (Reference plane on the front side)



### Additional Block Price

H	1Code	
	B3	B4
24		
28		
33		

### Selectable Shortest Rail Length for B3/B4

H	B3 (3-Block)	B4 (4-Block)
24	280	340
28	340	400
33	340	400

### Options for Linear Guide

Linear Guide Clamps	Rail Height Adjusting Blocks
P608	P609, 610
Block Derailment Prevention Parts / Dust Resistant Parts	Block / Rail Fixing Parts
Stopper Bolts	Rail Push Plates
P612	P612
Block Stopper Plates	Linear Locks
P612	P613
Rail Mounting Hole Caps	Linear Guide Lock Units
P612	P614