

Support Units - Fixed Side, Round Standard

Similar parts listed page [P.767](#)

Points of comparison between similar products

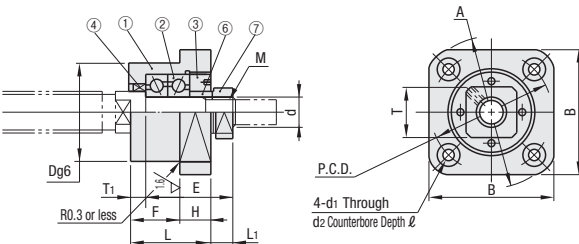
C-VALUE parts' load rating are different from similar parts. (For details, see P.754)
When considering C-VALUE parts, choose by comparing the specifications against similar parts. [P.759](#)

The Standard Type uses Preload Adjusted JIS 5 Class Angular Contact Bearing. It is suitable for high-accuracy and high-speed precision applications.

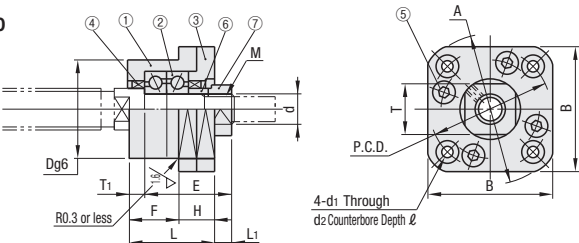


Type	Material	Surface Treatment
Fixed Side only	①③	①③⑥⑦
C-BRW	C-BRW-SET	Black Oxide

No.6~8



No.10~20



Number	Part Name	Quantity
①	Bearing Housing	1
②	Oversea manufactured angular contact bearing Grade 5	1 Set
③	Cover	1
④	Oil Seal	2
⑤	Hex Socket Head Cap Screw	4
⑥	Collar	2
⑦	Bearing Nut (with Set Piece)	1

- d=6 and 8 come with one Oil Seal (④).
- Do not disassemble (①), (②), (③), (④) and (⑤), as they must remain assembled.
- When used together with a MISUMI ball screw, there is one support unit accessory collar spare.

Part Number	Type	No.	Support Side SET	d	L	H	F	E	D	A	P.C.D.	B	L1	T1	d1	d2	I	M (Fine Thread)	T	Oil Seal Applicable Shaft Dia.	C-BRW Unit Price	C-BRW-SET Unit Price
6	C-BRW	6	-SET	6	20	7	13	22	22	35	28	28	5.5	3.5	2.9	5.5	3.5	M6x0.75	12	9.5		
8S	C-BRW	8S	-SET	8	23	9	14	26	28	43	35	35	7	4	3.4	6.5	4	M8x1.0	14	10		
8	C-BRW	8	-SET	8	23	9	14	26	28	43	35	35	7	4	3.4	6.5	4	M8x1.0	14	11.5		
10S	C-BRW	10S	-SET	10	27	10		29.5	34	52	42	42	7.5	5	4.5	8	4	M10x1.0	16	12		
10	C-BRW	10	-SET	10	27	10		29.5	34	52	42	42	7.5	5	4.5	8	4	M10x1.0	16	14		
12	C-BRW	12	-SET	12			17		36	54	44	44						M12x1.0	19	15		
15S	C-BRW	15S	-SET	15	32	15		36	40	63	50	52	10	6	5.5	9.5	6	M15x1.0	22	19.5		
15	C-BRW	15	-SET	15	32	15		36	40	63	50	52	10	6	5.5	9.5	6	M15x1.0	22	20		
20	C-BRW	20	-SET	20	52	22	30	50	57	85	70	68	8	10	6.6	11	10	M20x1.0	30	25		

Ordering Example Part Number C-BRW15 (Fixed-side single type) C-BRW15-SET (SET part type)

- For details of Bearings in addition to mounting interface accuracies of Support Units, Included Collar and Bearing Nut, see [P.759](#)
- Ball Screw Compatibility Chart [P.756](#)
- Store Accessories with care since they are required when assembling.

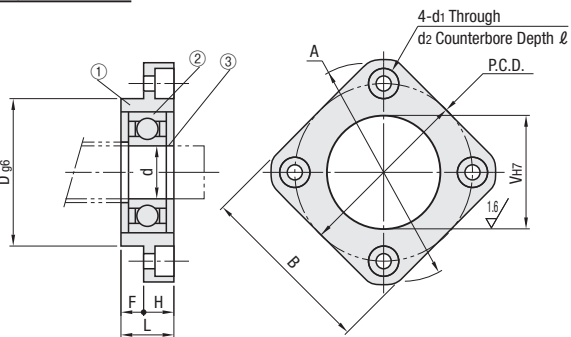
Support Units - Support Side, Round Standard

Similar parts listed page [P.768](#)



Type	Material	Surface Treatment
C-BUR	EN 1.1191 Equiv.	Black Oxide

Number	Part Name	Quantity
①	Housing	1
②	Oversea manufactured radial bearing	1
③	Retaining Ring (STWN, S)	1

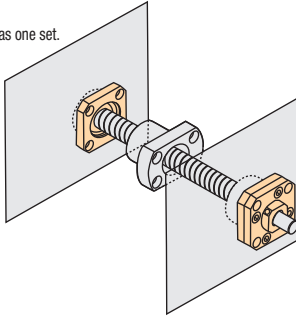
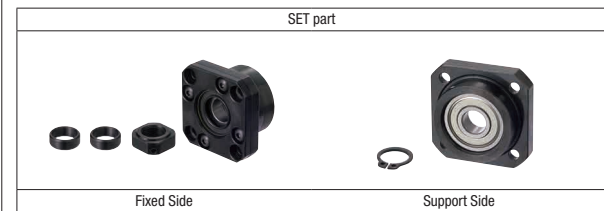


Part Number	Type	No.	d	L	H	F	D	A	P.C.D.	B	V	d1	d2	I	Bearing Part Number	Retaining Ring	C-BUR Unit Price
6	C-BUR	6	6	10	6	4	22	36	28	28	17	3.4	6.5		B606ZZ	STWN, S6	
10	C-BUR	10	8	12	7	5	28	43	35	35	22				B608ZZ	STWN, S8	
12	C-BUR	12	10	15		8	34	52	42	42	26	4.5	8		B600ZZ	STWN, S10	
15	C-BUR	15	15	17	9		40	63	50	52	32	5.5	9.5	5.5	B600ZZ	STWN, S15	
20	C-BUR	20	20	20	11	9	57	85	70	68	47	6.6	11	6.5	B620ZZ	STWN, S20	

Ordering Example Part Number C-BUR15 (Support Side separate item model number)

SET part overview

For customers using in conjunction with fixed side and support side
We recommend a SET, which allows the fixed side and support side to be ordered as one set.
5% price reduction when ordering in SETs



<SET parts>

SET Part Number	Fixed Side Part Number	Support Side Part Number
C-BRW6-SET	C-BRW6	C-BUR6
C-BRW8S-SET	C-BRW8S	C-BUR6
C-BRW8-SET	C-BRW8	C-BUR6
C-BRW10S-SET	C-BRW10S	C-BUR10
C-BRW10-SET	C-BRW10	C-BUR10
C-BRW12-SET	C-BRW12	C-BUR12
C-BRW15-SET	C-BRW15	C-BUR15
C-BRW15S-SET	C-BRW15S	C-BUR15
C-BRW20-SET	C-BRW20	C-BUR20