

Bushings for Inspection Components

D-Shape

For compatible Pins, see **P.1823** (D-Shape Tip) and **P.1833~P.1834** (D-Shape Tip).

Straight



Shouldered



Material	Hardness	Surface Treatment	Type			
			Straight		Shouldered	
			P ^{+0.03} _{-0.01} F ^{+0.05} ₀	PH7 F ^{+0.03} ₀	P ^{+0.03} _{-0.01} F ^{+0.05} ₀	PH7 F ^{+0.03} ₀
JIS-SKS93 Equiv.	50~60HRC	-	KJBSK	KJBHSK	KJBSTK	KJBHSTK
JIS-SKS93 Equiv.	50~60HRC	Electroless Nickel Plating	KJBSKM	KJBHSKM	-	-
EN 1.4301 Equiv.*1	-	-	KJBSKS	KJBHSKS	-	-
EN 1.4037 Equiv.	45~50HRC	-	KJBSCC	KJBHSCC	KJBSTCC	KJBHSTCC

6.3 / (1.6)

① Straight

② Shouldered

Part Number				D	P 0.01mm Increment	F (F<P/2) 0.1mm Increment	L 1mm Increment	Shouldered Type only	
Type								T Selection	H
Straight*1		Shouldered							
P ^{+0.03} _{-0.01} F ^{+0.05} ₀	PH7 F ^{+0.03} ₀	P ^{+0.03} _{-0.01} F ^{+0.05} ₀	PH7 F ^{+0.03} ₀						
KJBSK	KJBHSK	KJBSTK	KJBHSTK	8*3	3.00~ 5.00	0.3~ 2.4	5~25	2 3 5	D+4
KJBSCM	KJBHSCM			10	3.00~ 7.00	0.3~ 3.0			
KJBSCS	KJBHSCS			12	3.00~ 9.00	0.5~ 4.0			
KJBSCS	KJBHSCS			16	4.00~13.00	0.5~ 6.0			
KJBSCC	KJBHSCC	KJBSTCC	KJBHSTCC	20	6.00~17.00	1.0~ 8.0			
				25	8.00~21.00	2.0~10.0			

*1. For Straight Type, there must be 1mm or greater wall thickness between D bore part and dowel hole (D/2-F≥3). For EN 1.4301 Equiv., there must be a 2mm or greater wall thickness (D/2-F≥4).
*2. For EN 1.4301 Equiv., there must be a 2mm or greater wall thickness between D bore part and outer dia. (D-P/2≥2). *3. D=8 is not available for EN 1.4301 Equiv. Straight Type.

Ordering Example: Part Number - P - F - L - T
KJBSTK12 - P8.00 - F3.0 - L10 - T3

D	Unit Price									
	① Straight					② Shouldered				
	P ^{+0.03} _{-0.01} F ^{+0.05} ₀	PH7 F ^{+0.03} ₀	P ^{+0.03} _{-0.01} F ^{+0.05} ₀	PH7 F ^{+0.03} ₀		P ^{+0.03} _{-0.01} F ^{+0.05} ₀	PH7 F ^{+0.03} ₀	P ^{+0.03} _{-0.01} F ^{+0.05} ₀	PH7 F ^{+0.03} ₀	
	KJBSK	KJBSCM	KJBSCS	KJBSCC	KJBHSK	KJBHSCM	KJBHSCS	KJBHSCC	KJBHSTK	KJBHSTCC
8										
10										
12										
16										
20										
25										

Alterations: Part Number - P - F - L - T - (FC, NC-etc.)
KJBSTK12 - P8.00 - F2.0 - L10 - FC

Alterations	Code	Spec.
Groove (for Adhesive Reservoir)	FC	Adds an adhesive reservoir groove. *D≥P+3: Applicable only when a wall of 1.5mm or thicker is remaining. *Applicable when L≥10 for Straight Type, L≥15 for Shouldered Type.
Groove (for Retaining)	NC	Adds groove for retaining. *D≥P+3: Applicable only when a wall of 1.5mm or thicker is remaining. *Applicable when L≥10 for Straight Type, L≥15 for Shouldered Type.

Alterations	Code	Spec.
Additional Surface Treatment (Black Oxide)	STC	Adds black oxide surface treatment. *Applicable only to material JIS-SKS93 (except electroless nickel plating).
Shoulder Thickness Tolerance	TKC	Changes shoulder thickness tolerance to ±0.01. *Applicable to Shouldered Type only. *Combination with alteration LKC is not available.
L Dimension Tolerance	LKC	Changes L dimension tolerance to 0/-0.05. *Combination with TKC is not available.

Bushings for Inspection Components

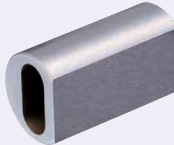
Oval

For compatible Pins, see **P.1825** (Standard Type).

Straight (Dowel Pin)



Straight (D Cut)



Shouldered (D Cut)



Material	Hardness	Type							
		Straight				Shouldered			
		Dowel Pin		D Cut		Dowel Pin		D Cut	
		P ^{+0.03} _{-0.01} W ^{+0.03} _{-0.01}	PH7 WH7	P ^{+0.03} _{-0.01} W ^{+0.03} _{-0.01}	PH7 WH7	P ^{+0.03} _{-0.01} W ^{+0.03} _{-0.01}	PH7 WH7	P ^{+0.03} _{-0.01} W ^{+0.03} _{-0.01}	PH7 WH7
JIS-SKS93 Equiv.	50~60HRC	KJBSC	KJBHSC	KJBSCD	KJBHSCD	KJBSTC	KJBHSTC	KJBSTCD	KJBHSTCD
EN 1.4301 Equiv.	-	KJBSCS	KJBHSCS	KJBSCDS	KJBHSCDS	KJBSTCS	KJBHSTCS	-	-
EN 1.4037 Equiv.	45~50HRC	KJBSCC	KJBHSCC	-	-	KJBSTCC	KJBHSTCC	KJBSTCDC	KJBHSTCDC

Some combinations are unavailable. Refer to the price list to select the available combination.

① Straight (Dowel Pin)

② Straight (D Cut)

③ Straight (Dowel Pin)

④ Straight (D Cut)

Part Number										D	P 0.01mm Increment	W 0.01mm Increment	L 1mm Increment	R	Shouldered Type only	
Type															T Selection	H
Straight					Shouldered											
Dowel Pin		D Cut		Dowel Pin		D Cut										
P _{+0.03 -0.01} W _{+0.03 -0.01}	PH7 WH7	P _{+0.03 -0.01} W _{+0.03 -0.01}	PH7 WH7	P _{+0.03 -0.01} W _{+0.03 -0.01}	PH7 WH7	P _{+0.03 -0.01} W _{+0.03 -0.01}	PH7 WH7	P _{+0.03 -0.01} W _{+0.03 -0.01}	PH7 WH7							
KJBSC	KJBHSC	KJBSCD	KJBHSCD	KJBSTC	KJBHSTC	KJBSTCD	KJBHSTCD									
KJBSCS	KJBHSCS	KJBSCDS	KJBHSCDS	KJBSTCS	KJBHSTCS											
KJBSCC	KJBHSCC			KJBSTCC	KJBHSTCC	KJBSTCDC	KJBHSTCDC									
										8 ^{3/3}	4.00~ 6.00			2.0	2 3 5	D+4
										10	4.00~ 8.00			2.0		
										12	4.00~10.00			2.0		
										16	6.00~14.00			2.0		
										20	10.00~18.00			2.0		
										25	14.00~22.00			2.0		
										30 ^{4/4}	20.00~27.00			2.0	-	-

*1 For Straight Type, there must be a 1mm or greater wall thickness between dowel hole and slotted hole ((D-W)/2)≥1.
*2 D=8 is applicable to Shouldered Type only. *3 D=30 is applicable to material of JIS-SKS93 Straight Type only.

Ordering Example: Part Number - P - W - L - T
KJB STC 12 - P9.50 - W4.50 - L15 - T2

D	① Straight Type Unit Price							
	Dowel Pin				D Cut			
	P ^{+0.03} _{-0.01} W ^{+0.03} _{-0.01}	PH7 WH7	P ^{+0.03} _{-0.01} W ^{+0.03} _{-0.01}	PH7 WH7	P ^{+0.03} _{-0.01} W ^{+0.03} _{-0.01}	PH7 WH7	P ^{+0.03} _{-0.01} W ^{+0.03} _{-0.01}	PH7 WH7
	KJBSC	KJBHSC	KJBSCD	KJBHSCD	KJBSTC	KJBHSTC	KJBSTCD	KJBHSTCD
10								
12								
16								
20								
25								
30								

D	② Shouldered Unit Price							
	Dowel Pin				D Cut			
	P ^{+0.03} _{-0.01} W ^{+0.03} _{-0.01}	PH7 WH7	P ^{+0.03} _{-0.01} W ^{+0.03} _{-0.01}	PH7 WH7	P ^{+0.03} _{-0.01} W ^{+0.03} _{-0.01}	PH7 WH7	P ^{+0.03} _{-0.01} W ^{+0.03} _{-0.01}	PH7 WH7
	KJBSTC	KJBSTCS	KJBSTCC	KJBHSTC	KJBHSTCS	KJBHSTCC	KJBSTCD	KJBHSTCDC
8								
10								
12								
16								
20								
25								

Alterations: Part Number - P - W - L - T - (FC, NC-etc.)
KJBHSC20 - P15.00 - W12.00 - L20 - NC

Alterations	Code	Spec.
Groove (for Adhesive Reservoir)	FC	Adds an adhesive reservoir groove. *D≥P+3: Applicable only when a wall of 1.5mm or thicker is remaining. *Applicable when L≥8 for Straight Type, L≥15 for Shouldered Type.
Groove (for Retaining)	NC	Adds groove for retaining. *D≥P+3: Applicable only when a wall of 1.5mm or thicker is remaining. *Applicable when L≥8 for Straight Type, L≥15 for Shouldered Type.

Alterations	Code	Spec.
Radius R C Chamfered	RN	Adds C Chamfering (0.1 or less) to R.
Shoulder Thickness Tolerance	TKC	Changes shoulder thickness tolerance to ±0.01. *Applicable to Shouldered Type only.
L Dimension Tolerance	LKC	Changes L dimension tolerance to 0/-0.05. *Applicable only when L≤19