

[High Precision] XY-Axis Dovetail Slide, Feed Screw

Symmetrical Stack, Space Saving

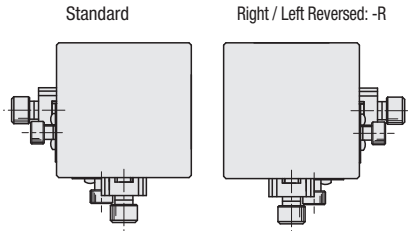
■ **Features:** Since two side faces out of four are freely configurable, this type of stage product can be symmetrically aligned with its reserved type for combination use or can be configured for space-saving.

■ Symmetrical Stack, Space Saving



Dovetail Slide
DSXYEG

- The number of faces intended for feed knob / clamp operations is limited to two.
- Space needed for adjustment is saved.
- It is also possible to reposition two stages in such a way that they become much closer to each other.



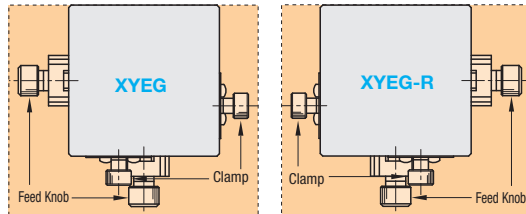
⚙ When symmetrical use as shown on the above figure is desired, select one ☐ Type and one ☐-R Type, respectively. (Those types are not sold as a set.)

RoHS 10

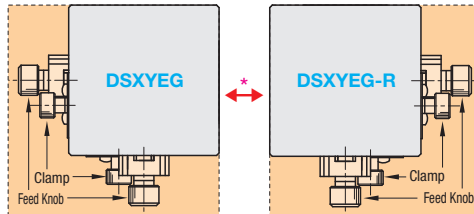
⚙ (Note) For dimension details, see the CAD data or the catalog's X-Axis stage dimension details on P.1933.

Part Number	Type	No.	Stage Surface (mm)	Travel Distance (mm)	Load Capacity (N)	Stage Configuration (XEG: P.1897)		Reference Part Number (Page)	Unit Price
						Top	Bottom		
DSXYEG		25	25x25	±5	28.4	XEG25-R	XEG25	XYEG (Asymmetrical) (P.1933)	
		25-R				XEG25	XEG25-R		
		40				XEG40-R	XEG40		
		40-R	40x40	±7	27.4	XEG40	XEG40-R		
		60				XEG60-R	XEG60		
		60-R	60x60	±9	33.3	XEG60	XEG60-R		

■ XYEG



■ DSXYEG



* Realization of Space Saving

⬜: Accessible Space

- Three open sides are needed for Feed Knobs and Clamps
- Sufficient space must be retained for adjustment.



Ordering Example

Part Number

DSXYEG60
DSXYEG60-R

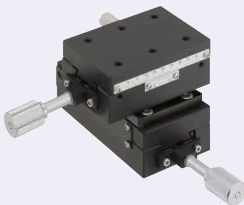
⚙ For symmetrical use, select one standard stage and one reversed (-R Type) stage, respectively, as indicated above.

[High Precision] XY-Axis Dovetail Slide, Feed Screw

Rectangular / Reinforced Clamp / Low Profile (Lead 4.2mm)

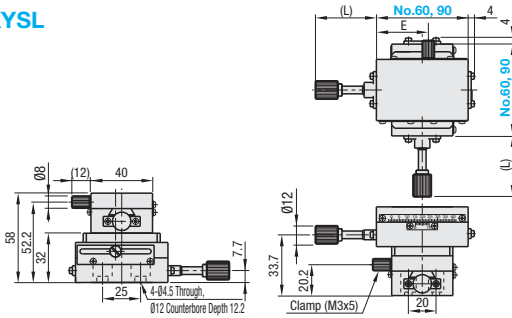
■ **Features:** Smooth feeding 4.2mm lead Dovetail Slide Feed Screw Stages.

■ XY-Axis, Rectangular (Lead 4.2mm)



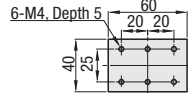
X-Axis: P.1900
Z-Axis: P.1960

XYSL

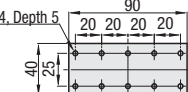


• Stage Top Mounting Hole Dimensions

No.60



No.90



⬜ Material: Aluminum Alloy
⬜ Surface Treatment: Black Anodize

Part Number		Stage Surface	Travel Distance	(L)	E	Travel per Rotation	Load Capacity	Travel Accuracy (μm)		Weight	Accessory (4 pcs.)	Unit Price
Type	No.	(mm)	(mm)			(mm)	(N)	Straightness	Parallelism	(kg)	Type M-L	
XYSL	60	40x60	±21	40	34	4.2	34.3	30	30	0.45	SCB4-8	
	90	40x90	±35	60	49					0.63		

⚙ Resolution (Vernier Scale Indication): 0.1mm/division
⚙ Extension Cover HDEXT12 (Sold Separately): Ø12 feed screw knob can be extended. ⬜ P.2004
⚙ Travel accuracy values shown are for single axis configuration.



Ordering Example
Part Number
XYSL60

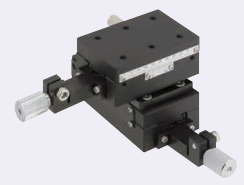


Alterations
Part Number
XYSL90 - (R)

⚙ See the CAD data for details.

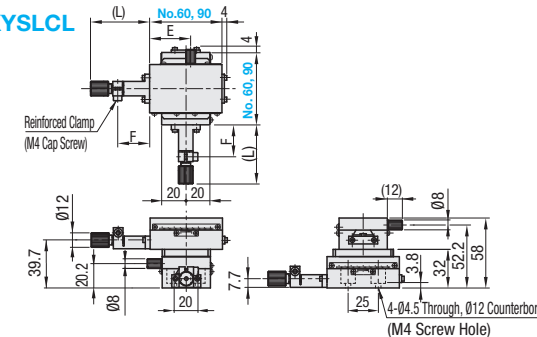
■ The feed knob is directly retained with a split clamp, resulting in less position drift.

■ XY-Axis, Reinforced Clamp (Lead 4.2mm)



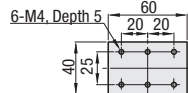
X-Axis: P.1900
Z-Axis: P.1960

XYSLCL

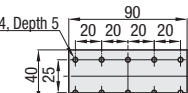


• Stage Top Mounting Hole Dimensions

No.60



No.90



⬜ Material: Aluminum Alloy
⬜ Surface Treatment: Black Anodize

Part Number	Stage Surface (mm)	Travel Distance (mm)	(L)	E	F	Travel per Rotation (mm)	Load Capacity (N)	Travel Accuracy (μm)	Weight (kg)	Accessory (4 pcs.)	Unit Price
XYSLCL	No. 60	40x60	±21	49	34	26.5	37.4	30	30	0.37	SCB4-8
	No. 90	40x90	±35	63	49	40.5	36.7		0.53		

⚙ Resolution (Vernier Scale Indication): 0.1mm/division
⚙ Extension Cover HDEXT12 (Sold Separately): Ø12 feed screw knob can be extended. ⬜ P.2004
⚙ Travel accuracy values shown are for single axis configuration.



Ordering Example
Part Number
XYSLCL90



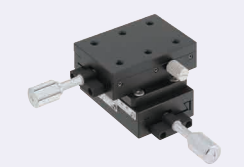
Alterations
Part Number
XYSLCL60 - (R)

⚙ The reinforced clamp and the clamp screw are tightened in the same direction.

⚙ See the CAD data for details.

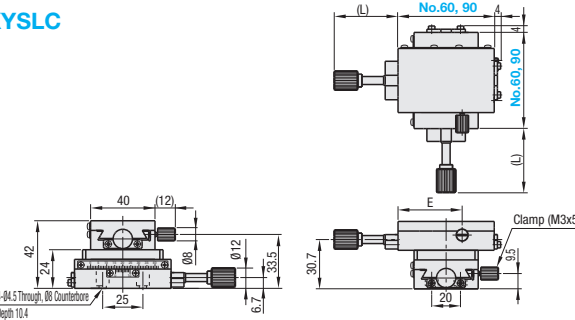
■ Travel distance per knob rotation is approx. 1/4 of the Rack & Pinion Type. Suitable for fine pitch positioning over a long stroke.

■ XY-Axis, Low Profile (Lead 4.2mm)



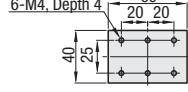
X-Axis: P.1900
Z-Axis: P.1960

XYSLC

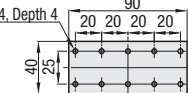


• Stage Top Mounting Hole Dimensions

No.60



No.90



⬜ Material: Aluminum Alloy
⬜ Surface Treatment: Black Anodize

Part Number		Stage Surface (mm)	Travel Distance (mm)	(L)	E	Travel per Rotation (mm)	Load Capacity (N)	Travel Accuracy (μm)		Weight (kg)	Accessory (4 pcs.)	Unit Price
Type	No.							Straightness	Parallelism		Type M-L	
XYSLC	60	40x60	±21	40	40	4.2	24.5	30	30	0.33	SCB4-5	
	90	40x90	±35	60	55					0.43		

⚙ Resolution (Vernier Scale Indication): 0.1mm/division
⚙ Extension Cover HDEXT12 (Sold Separately): Ø12 feed screw knob can be extended. ⬜ P.2004
⚙ Travel accuracy values shown are for single axis configuration.



Ordering Example
Part Number
XYSLC60



Alterations
Part Number
XYSLC90 - (R)

⚙ The reinforced clamp and the clamp screw are tightened in the same direction.

⚙ See the CAD data for details.