

[Simplified Adjustments] Z-Axis, Push Screw

[Simplified Adjustments] Z-Axis, Feed Screw Standard / Large Handles

Features: Economical product configured for Z-axis use by adding a bracket to a push screw type X-axis stage. The unit is more compact and has finer feeding characteristic compared to the Feed Screw Type on P.1952-. Utilize for light loads.

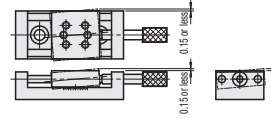
Features: Product configured for Z-axis use by adding a bracket to a feed screw type X-axis stage. Excels in load capacities compared to the Push Screw Type on P.1951.

Z-Axis, Push Screw



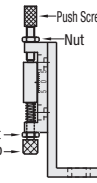
Accuracy Standards

There are some mechanical clearances as shown below, and not recommended for positioning applications requiring accuracies.



One Point

The push screw and clamp (Alterations: -CL) can be reinforced by combining with an extra nut to form a double-nut arrangement.

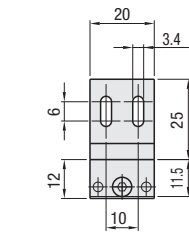


Type	Main Body	Shaft	Spring	Push Screw	Accessory
	M Material S Surface Treatment	M Material	M Material	M Material	
ZKNG	Aluminum Alloy Black Anodize	EN 1.4305 Equiv.	EN 1.4301 Equiv.	EN 1.1191 Equiv. (Electroless Nickel Plating)	Hex Socket Low Head Cap Screw (CBS4-6) 2 pcs.

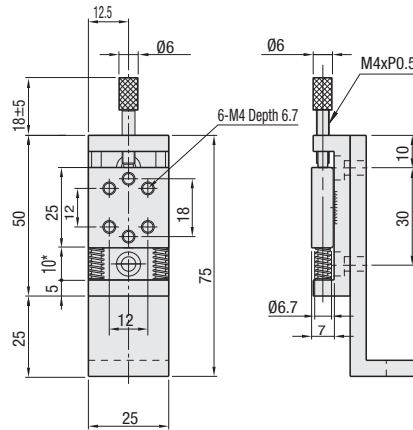
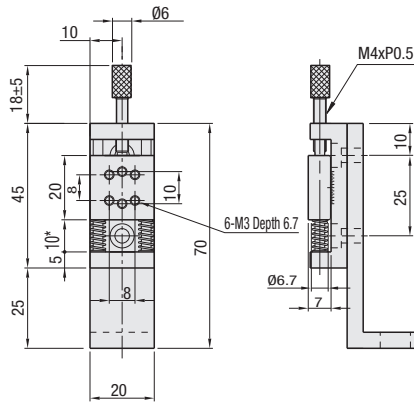
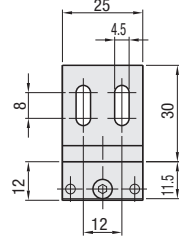
X-Axis: P.1893
XY-Axis: P.1929 Travel per Rotation: 0.5mm

* Dimensions when scale is set at 0

ZKNG20



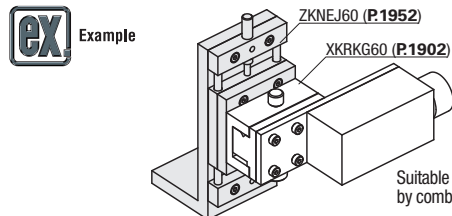
ZKNG25



Part Number	Stage Surface	Travel Distance	Load Capacity	Weight	Unit Price
Type	No.	(mm)	(N)	(kg)	ZKNG
	20	20x20	±5	0.05	
	25	25x25	±5	0.07	

Travel per Rotation: 0.5mm Minimum Graduation: 0.5mm

Ordering Example Part Number ZKNG20



Suitable for low magnification camera XZ-axis adjustments by combining with an X-Axis Rack & Pinion Unit on P.1902.

Alterations Part Number - (CL) ZKNG20 - CL

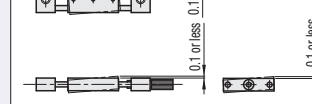
Alteration	Opposite Clamp Bolt
Spec.	Opposing clamp screw for table immobilizing (M4, Pitch 0.7) will be included.
Code	CL

Z-Axis, Feed Screw

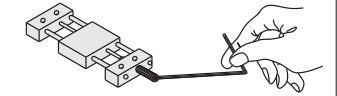


Accuracy Standards

Not recommended for precise positioning due to its clearance shown on the left.



One Point

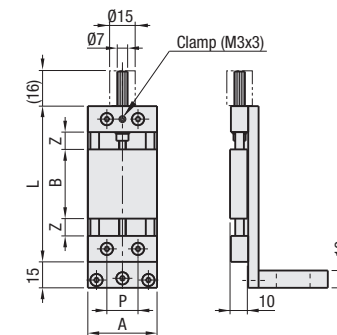
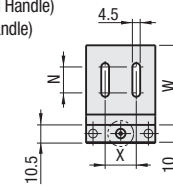


Long stroke moves can be made easily with use of a ball-point hex wrench.

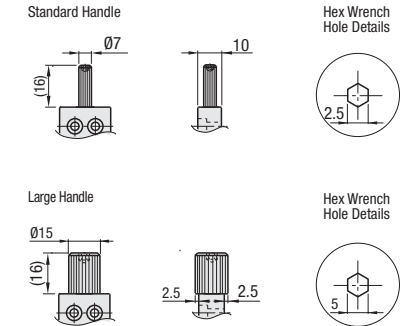
Type	Main Body	Shaft	Knob	Feed Screw	Accessory
	M Material S Surface Treatment	M Material	M Material	M Material	
ZKNEJ ZKJL	Aluminum Alloy Black Anodize	EN 1.4301 Equiv.	EN 1.4305 Equiv.	EN 1.4301 Equiv.	Hex Socket Head Cap Screw (SCB4-15) 2 pcs.

X-Axis: P.1890
XY-Axis: P.1930 Travel per Rotation 0.7mm

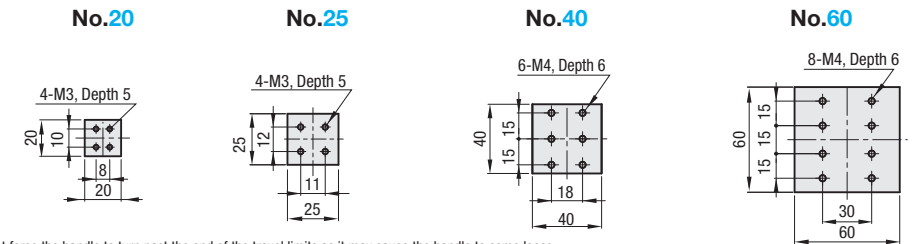
ZKNEJ (Standard Handle) ZKJL (Large Handle)



Handle Shape Comparisons



Stage Top Mounting Hole Dimensions



Do not force the handle to turn past the end of the travel limits as it may cause the handle to come loose.

Part Number	Stage Surface	Travel Distance	Z	L	P	W	X	N	Load Capacity	Weight	Unit Price
Type	No.	(mm)	(mm)						(N)	(kg)	ZKNEJ ZKJL
ZKNEJ ZKJL	20	20x20	±7	8	66	8	36	10	9.8	0.08	
	25	25x25	±7	8	71	11	36	15	10	0.10	
	40	40x40	±9	10	90	18	46	18	15	0.22	
	60	60x60	±13	15	120	30	56	40	20	0.39	

Travel per Rotation: 0.7mm

Ordering Example Part Number ZKJL40

Alterations Part Number - (MMR) - (CLC) ZKJL60 - CLC ZKNEJ20 - MMR ZKNEJ40 - MMR - CLC

Alterations	Mount a Scaled Label	Change of Clamp (Knurled Knob)
Spec.	Adds a scaled label on a Z-axis bracket. Minimum Graduation: 0.5mm	Changes Clamp Screw to Knurled Knob.
Code	MMR	CLC