

[High Precision] Dovetail Slide, Rack & Pinion / Cross Roller

P.1972

■ Horizontal Surface Z-Axis,
Feed Screw



RoHS10

Technical drawing of a lathe tool holder showing four views: Top, Front, Arrow View A, and Side View A. The drawing includes dimensions in inches and millimeters, and labels for various features like the Feed Knob, Clamp, and mounting holes.

Top View: Shows a square plate with a central circular feature. Dimensions include 60, 25, 25, 25, 25, 60, 5, 9.5, and 26. Labels include "Feed Knob", "Clamp", and "8-M4, Depth 8".

Front View: Shows the profile of the tool holder. Dimensions include 50, 25, and 38 ("). Labels include "3-M5", "Ø8 Counterbore, Depth 4.5", and "Arrow View A".

Arrow View A: Shows the tool holder from the perspective of the arrow. Dimensions include 50, 25, and 38 ("). Labels include "3-M5", "Ø8 Counterbore, Depth 4.5", and "Arrow View A".

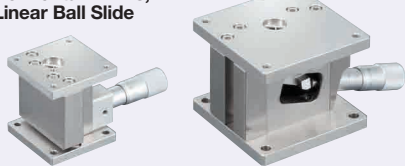
Side View A: Shows the tool holder from the perspective of the arrow. Dimensions include 50, 25, and 38 ("). Labels include "3-M5", "Ø8 Counterbore, Depth 4.5", and "Arrow View A".

M Material: Aluminum Alloy
S Surface Treatment: Black Anodize

Part Number		Stage Surface (mm)	Travel Distance (mm)	Travel per Rotation (mm)	Parallelism (μm)	Load Capacity (N)	Weight (Kg)	Unit Price
TYPE	No.							
ZLFD	40	40x40	+5	0.5	100	29.4	0.15	
	60	60x60	+7	0.5	100	98.1	0.37	



■ **Horizontal Z-Axis,
Linear Ball Slide**



RoHS10

B60

4-M4, Depth 6

60

50

50

60

21

38

29.4 (MAX 35.7)

55±5

6

6

5

50

34.5

Ø13

4-Ø4.5 Through

50

M Material: Steel

S Surface Treatment: Electroless Nickel Plating

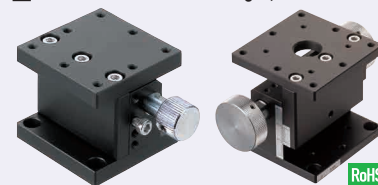
M Material: Steel
S Surface Treatment: Electroless Nickel Plating

Part Number		Stage Surface (mm)	Travel Distance (mm)	Load Capacity (N)	Resolution (μm/division)	Parallelism (μm)	Weight (kg)	Unit Price
Type	No.							
ZLLB	40	40x40	±3.0	29.4	≈ 5	80	0.3	
	60	60x60	±5.0	49.0	≈10		0.7	


Ordering Example

Part Number
ZLLB40

■ Horizontal Surface Z-Axis Stages, Rack & Pinion

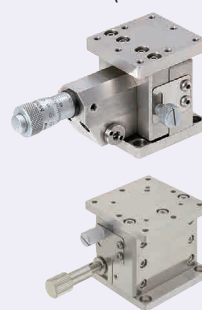


RoHS1

Part Number		Stage	Travel	Travel per	Load	Travel Accuracy	Moment Load Capacity (N-m)			Weight	Accessory (4 pos.)	Unit Price
Type	No.	Surface (mm)	Distance (mm)	Rotation (mm)	Capacity (N)	Straightness	Pitching	Yawing	Rolling	(kg)	Type M-L	
ZLFG	25	25x25	±2.5	≈8	6.9	30μm	0.6	1.0	1.5	0.08	SCB2-8	
	40	40x40	±5	≈13	9.8		0.6	1.0	1.5	0.12	SCB3-6	
	60	60x60	±10	≈17	14.7		4.0	4.0	2.5	0.47	SCB4-6	

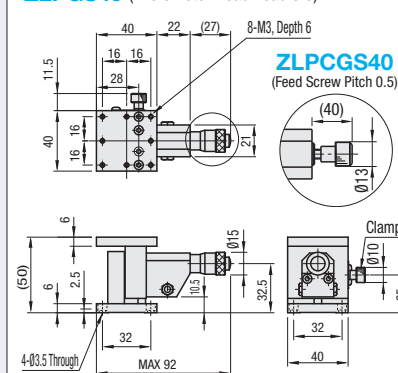
Ordering
Example

■ Horizontal Surface Z-Axis,
Cross Roller (Stainless Steel)

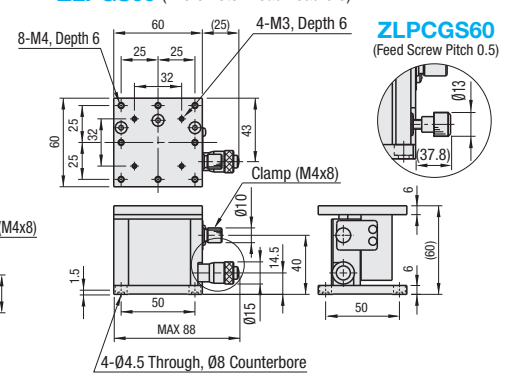


RoHS10

ZLPCGS40
(Feed Screw Pitch 0.5)



ZLPCGS60
(Feed Screw Pitch 0.5)



Part Number		Stage Surface	Travel Distance (mm)	Load Capacity (N)	Travel Accuracy Straightness	Moment Load Capacity (N-m)			Moment Rigidity (N-cm)			Parallelism (μm)	Weight (kg)	Accessory (4 pcs.)	Unit Price
Type	No.	(mm)	(mm)	(N)		Pitching	Yawing	Rolling	Pitching	Yawing	Rolling		TypeM-L		
ZLPGS	40	40x40	±3	29.4	3μm	1.8	1.1	1.2	0.81	0.22	0.30	100	0.49	SCB3-6	
	60	60x60	±3	58.8		3.3	2.4	3.1	0.42	0.18	0.12		0.99	SCB4-6	
ZLPCGS	40	40x40	±3	29.4	3μm	1.8	1.1	1.2	0.81	0.22	0.30	100	0.47	SCB3-6	
	60	60x60	±3	29.4		3.3	2.4	3.1	0.42	0.18	0.12		0.97	SCB4-6	

❗ The micrometer head is only for raising and lowering the positioning stage. The scale and the amount by which the positioning stage is raised and lowered will vary.

