

Hollow Stands

Pipe Threaded / Pipe Threaded, Welded

■ **Features:** Can be used with Rotary Connectors on P2191. Select Welded Type for mounting touch panels or boxes.

■ Pipe Threaded



■ Pipe Threaded, Welded



RoHS 10

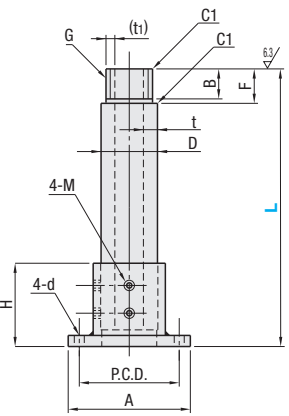
■ Pipe Threaded

Type		Material	Surface Treatment	Portion
Round Flanged	Compact Flanged			
PSEG	WPSEG	EN 1.0480 Equiv. EN 1.0038 Equiv.	Electroless Nickel Plating	Hollow Bracket
PSE GK	WPSE GK	EN 1.0480 Equiv. EN 1.0038 Equiv.	Black Oxide	Hollow Bracket
PSEGS	-	EN 1.4301 Equiv. EN 1.4301 Equiv.	-	Hollow Bracket

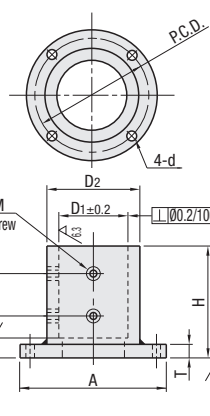
■ Pipe Threaded, Welded

Type		Material	Surface Treatment	Portion
Round Flanged	Compact Flanged			
PSYG	WPSYG	EN 1.0480 Equiv. EN 1.0038 Equiv.	Electroless Nickel Plating	Hollow Bracket

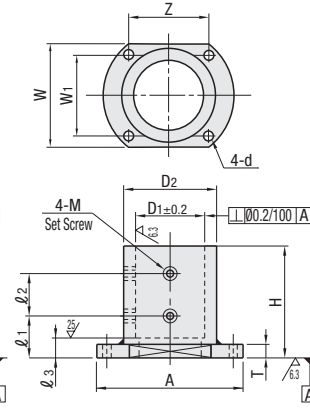
■ Pipe Threaded



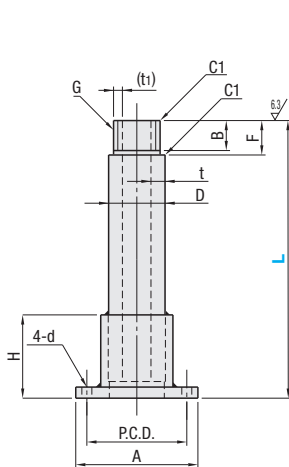
Round Flanged



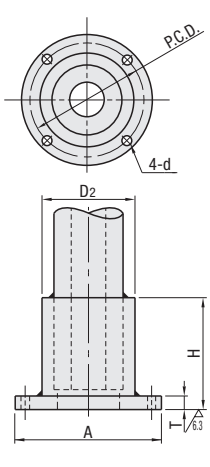
Compact Flanged



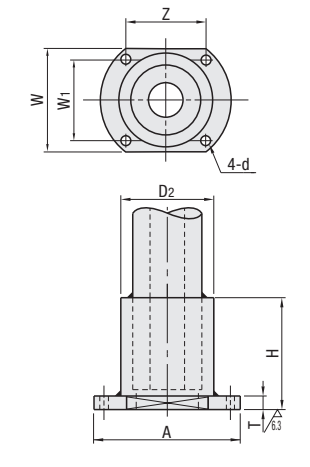
■ Pipe Threaded, Welded



Round Flanged



Compact Flanged

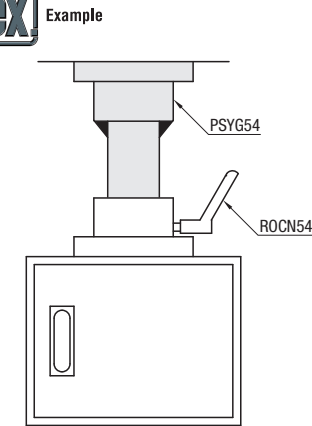


Part Number	Type	G(PF)		L	F	B	D	D1	D2	t	(t1)	P.C.D.	H	d	M	T	H	ℓ1	ℓ2	ℓ3	W	Z	W1	
		Nominal	Nominal of Thread																					Thread O.D.
28	Round Flanged	G1	33.25	200~800	26	23	40 ±0.4	40.5	54	7	3.6	100	80	60	9	M6	10	60	25	25	15	64	62	44
36	Welded Round Flanged	G1 1/4	41.91	-	29	26	50.8 ±0.41	51.5	65	8	-	110	90	75	M8	12	75	30	30	-	74	74	50	
42	PSE GK	G1 1/2	47.80	200~1000	30	27	60.5 ±0.49	61	76.3	4	3.6	120	100	90	M8	12	90	35	40	-	90	76	70	
54	PSEGS	G2	59.61	-	35	32	76.3 ±0.56	77	89.1	5.5	4.9	130	110	105	M8	12	105	45	45	20	100	80	80	
70	WPSYG	G2 1/2	75.18	300~1000	40	37	89.1 ±0.9	90	101.6	7	6.3	140	120	120	M8	12	120	40	60	-	110	86	90	
82	WPSE GK	G3	87.88	-	40	37	101.6 ±1.02	102	120	6	5.3	160	140	150	M8	12	150	40	90	-	130	94	110	
92	WPSE GK	G3 1/2	100.33	-	40	37	101.6 ±1.02	102	120	6	5.3	160	140	150	M8	12	150	40	90	-	130	94	110	

- ⚠ Parallel pipe thread is JIS B 0202 Class B.
- ⚠ PSEGS is available for nominal 42 and 54 only.
- ⚠ For rotary connectors, refer to P2191, 2192
- ⚠ Only for PSEGS54, t dimension is 4.9, and (t1) dimension is 4.4.

Ordering Example	Part Number	-	L
	PSEG42	-	600
	WPSYG54	-	300

Nominal Dimension	L	Unit Price							
		Pipe Threaded				Pipe Threaded, Welded			
		Round Flanged		Compact Flanged		Round Flanged		Compact Flanged	
		Electroless Nickel Plating	Black Oxide	EN 1.4301 Equiv.	Electroless Nickel Plating	Black Oxide	Electroless Nickel Plating	Electroless Nickel Plating	
	PSEG	PSE GK	PSEGS	WPSEG	WPSE GK	PSYG	WPSYG		
28	Min. L ~ 400								
	L401 ~ 600								
	L601 ~ 800								
36	Min. L ~ 400								
	L401 ~ 600								
	L601 ~ 800								
42	Min. L ~ 400								
	L401 ~ 600								
	L601 ~ 800								
54	Min. L ~ 400								
	L401 ~ 600								
	L601 ~ 800								
70	Min. L ~ 400								
	L401 ~ 600								
	L601 ~ 800								
82	Min. L ~ 400								
	L401 ~ 600								
	L601 ~ 800								
92	Min. L ~ 400								
	L401 ~ 600								
	L601 ~ 800								



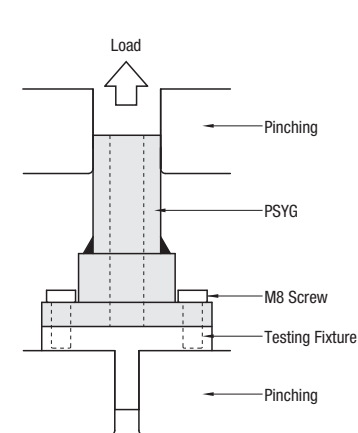
Use "Pipe Threaded, Welded" for mounting this product upside down.

<Reference Data on Tensile Load>

The Result of Fracture Test by the Following Measuring Method (N=3)

Nominal	Fracture Location	Fracture Load (kN)		Deformation Amount (mm)	
		Max.	Min.	Max.	Min.
28	All at M8 Screws	186.016	181.891	0.907	0.666
54	All at M8 Screws	176.484	172.094	0.024	0.011

<Measuring Method of Tensile Load>



<Deformation Amount>

