

8 Series

Technical drawing of the 8 Series connector. The side view on the left shows a width of 10. The top view on the right shows a square footprint with a central circular hole and a dimension of 40, 80 across the top.

■ Scalene Brackets



ex

Suitable for a narrow space.
HBLTF8

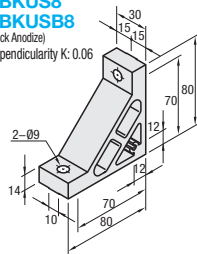
■ Ultra Thick Brackets

[illegible]

Type	M Material	S Surface Treatment
HBLUS8	EN AC-	Anodize
HBLUSB8	51400-T5 Equiv.	Black Anodize

Part Number	Mass (g)	Applicable Screw, T Nut				Allowable Load (N)	Unit Price 1-99 pc(s)	Volume Discount Rate 100-200
		Screw	Quantity	T Nut	Quantity			
HBLUS8	151	CBM8-25	2	HNTT8-8	2	2058		
HBLUS8* (Black Anodize)								

A diagram showing a cross-section of a roof. A horizontal line represents the ground level. A vertical line represents a wall. A roof line slopes upwards from the ground level at an angle of 30 degrees. A horizontal line is drawn parallel to the ground level, intersecting the roof line. The angle between this horizontal line and the roof line is labeled 15 degrees. The distance between the wall and the point where the horizontal line intersects the roof line is labeled 30.



Type	M Material	S Surface Treatment
HBKUS8	EN AC-	Anodize
HBKUSB8	51400-T5 Equiv.	Black Anodize

Part Number	Mass (g)	Applicable Screw, T Nut				Allowable Load (N)	Unit Price 1-99 pc(s)	Volume Discount Rate 100-200
		Screw	Quantity	T Nut	Quantity			
HBKUS8	151	CBM8-25	2	HNTT8-8	2	2058		
HBKUS8* (Black Anodize)								

■ Thick Brackets

[illegible]

Part Number	Mass	Applicable Screw, T Nut			Allowable Load (N)	Unit Price 1-99 pc(s).	Volume Discount Rate 100-200
	(g)	Screw	Quantity	T Nut			
HBLTSW8	113	CBM8-20	4	HNTT8-8	4	3087	

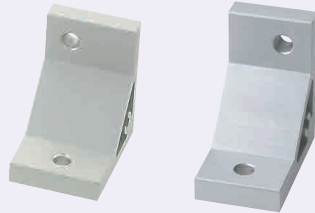
■ Triangle Brackets



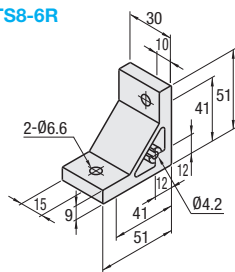
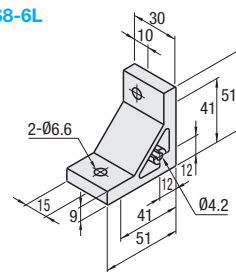
Technical drawing of a 3D-printed part. The part is a right-angled triangle with a base of 80 mm and a height of 80 mm. The top horizontal edge is 20 mm wide, and the right vertical edge is 20 mm wide. The hypotenuse is 40 mm long. The part has a 3-R1 fillet on the inner corner and a 4-M8 Counterbore on the top horizontal edge. The bottom horizontal edge is 20 mm wide, and the right vertical edge is 20 mm wide. The part is shown in a perspective view with dimensions in millimeters.

Part Number	Mass (g)	Applicable Screw, T Nut				Allowable Load (N)	Unit Price 1-99 pc(s)	Volume Discount Rate 100-200
		Screw	Quantity	T Nut	Quantity			
HBLDSWT8	195	CBM8-15	4	HNTT8-8	4	3087		

■ Assembly Brackets for Different Extrusion Sizes



HBLTS8-6R



Part Number	Mass (g)	Applicable Screw, T Nut		Unit Price	Volume Discount Rate	
		Screw	T Nut	Quantity	1-99 pc(s)	100-200
HBLTS8-6L	66	CBMG-20	HNTT8-6	1		
		CBMG-15	HNTT6-6			
		CBMG-20	HNTT8-5			
HBLTS8-6R		CBMG-15	HNTT6-6			



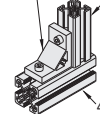
Ordering Example

Part Number
HBLTSW8




Example

HBLTS8-6R 30 Square



Alterations	Code	Spec.	Applicable Bracket
Applicable Screws and Nuts Set	SET SST (Stainless Steel)	Applicable screws and nuts for fixing the brackets on extrusions come in a set. (Adds to the bracket price.)	HBLTF8
	SEU (Pre-Assembly Insertion) Spring Nuts		HBLUS8
	SSU (Pre-Assembly Insertion) Spring Nuts Stainless Steel		HBLUSB8
	SEP (Post-Assembly Insertion) Spring Nuts	(Ex.) When HBLTSW8 is specified:	HBKUS8
	SSP (Post-Assembly Insertion) Spring Nuts	Code Screw Nut	HBKUSB8
	SEP (Post-Assembly Insertion) Spring Nuts Stainless Steel	SET CBM8-20 HNTT8-8	
	SSP (Post-Assembly Insertion) Spring Nuts	SST SCB8-20 HNTST8-8	HBLTSW8
	SEP (Post-Assembly Insertion) Spring Nuts	SEU CBM8-20 SHNTU8-8	
	SSP (Post-Assembly Insertion) Spring Nuts	SSU SCB8-20 SHNTU8-8	HBLDSWT8
	SEP (Post-Assembly Insertion) Spring Nuts	SEP CBM8-20 HNTPT8-8	
	SSP (Post-Assembly Insertion) Spring Nuts	SSP SCB8-20 SHNTP8-8	HBLST8-6L
	SEC (Screws with Captured Washer and Nuts)	SEC HCBST8-24 HNTT8-8	
		When specifying other than HBLTSW8, check for the applicable screws and nuts.	HBLST8-6R

 Screws for black anodized brackets are HCBMTB (Trivalent Chromate Black) on **P.751**.
 Included Screw is not RoHS compliant when -SET, -SEU or -SEP other than black anodized brackets is specified.