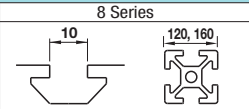


# Extruded Brackets - For 3 or More Slots

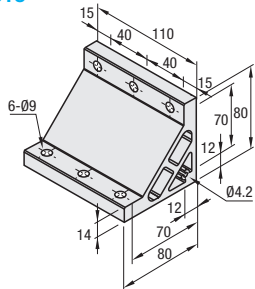
For 8 Series (Slot Width 10mm) Aluminum Extrusions



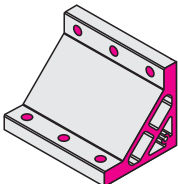
■Features: Brackets to connect Extrusions with 3 slots (HFS8-40120 etc.) with one bracket.

## Ultra Thick Brackets

NBLUT8  
HBLUT8



Type	Material	Surface Treatment
NBLUT8	EN AW-6063-T5 Equiv.	Anodize
HBLUT8	EN AC-51400-T5 Equiv.	

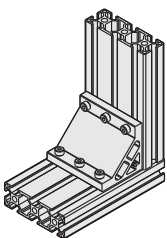


Both sides and screw holes of NBLUT8 is not anodized.

Part Number	Mass (g)	Applicable Screw, T Nut		Allowable Load (N)	Unit Price 1~99 pc(s).	Volume Discount Rate 100~200
		Screw	T Nut			
NBLUT8 HBLUT8	564	CBM8-25	6 HNTT8-8	5292		



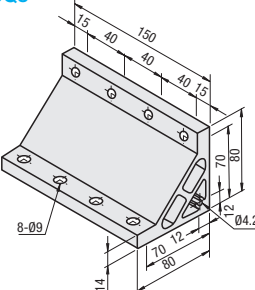
Example



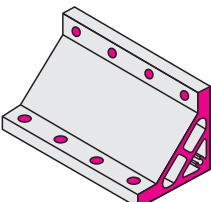
■Features: Brackets to connect Extrusions with 4 slots (HFS8-40160 etc.) with one bracket.

## Brackets for Heavy Load

NBLUQ8  
HBLUQ8



Type	Material	Surface Treatment
NBLUQ8	EN AW-6063-T5 Equiv.	Anodize
HBLUQ8	EN AC-51400-T5 Equiv.	

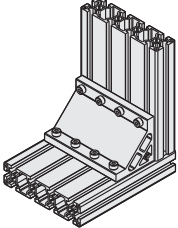


Both sides and screw holes of NBLUQ8 is not anodized.

Part Number	Mass (g)	Applicable Screw, T Nut		Allowable Load (N)	Unit Price 1~99 pc(s).	Volume Discount Rate 100~200
		Screw	T Nut			
NBLUQ8 HBLUQ8	770	CBM8-25	8 HNTT8-8	7056		



Example



Ordering Example

Part Number  
HBLUT8



Alterations

Part Number - (C, SET, SST, SEU, SSU, SEP, SSP, SEC)  
HBLUT8 - SET

Alterations	Code	Spec.	Applicable Bracket
Mounting Hole Alteration for Cover	C	Adds taps on a bracket for cover mounting. (M5 on Both Sides) (Mounting Screw HCBM on P.754)	NBLUT8
			HBLUT8
			NBLUQ8
			HBLUQ8
			HBLUQ8

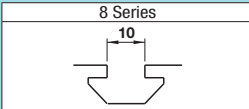


Alterations	Code	Spec.	Applicable Bracket
Applicable Screws and Nuts Set	SET SST (Stainless Steel)	Applicable screws and nuts for fixing the brackets on extrusions come in a set. (Adds to the bracket price.) (Ex.) When HBLUT8 is specified:	NBLUT8
	SEU (Pre-Assembly Insertion Spring Nuts)		
	SSU (Pre-Assembly Insertion Spring Nuts)	Code	HBLUT8
	SEP (Post-Assembly Insertion Spring Nuts)	Screw	
	SSP (Post-Assembly Insertion Spring Nuts)	Nut	NBLUQ8
	SEC (Screws with Captured Washer and Nuts)	SET CBM8-25 HNTT8-8	
		SST SCB8-25 HNTT8-8	HBLUQ8
		SEU CBM8-25 HNTU8-8	
		SSU SCB8-25 SHNTU8-8	HBLUQ8
		SEP CBM8-25 HNTP8-8	
		SSP SCB8-25 SHNTP8-8	HBLUQ8
		SEC HCBST8-29 HNTT8-8	

Included Screw is not RoHS compliant when -SET, -SEU or -SEP are specified.

# Post-Assembly Insertion Easy Brackets

For 8 Series (Slot Width 10mm) Aluminum Extrusions



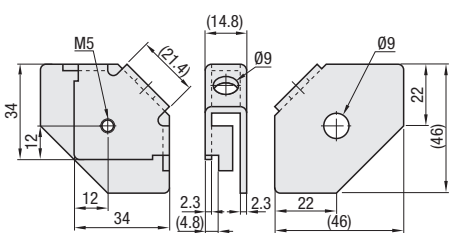
■Features: 2 aluminum extrusions can be easily connected with only 1 tightening screw. Brackets can be mounted on the extrusion slots after assembly.

## Post-Assembly Insertion Easy Brackets

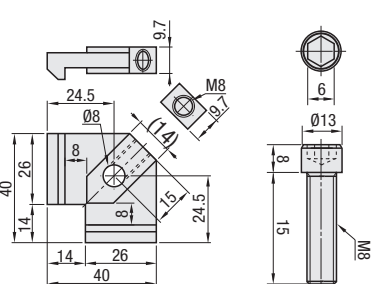
Components	Material	Surface Treatment
①Joint Plate	EN 1.0330 Equiv.	Trivalent Chromate
②Joint Brackets	EN 1.1191 Equiv.	
③Hex Socket Head Cap Screw	EN 1.7220 Equiv.	

HABL8

①Joint Plate



②Joint Brackets



③Hex Socket Head Cap Screw

Overtightening may cause deformation of joint plates. (Reference Tightening Torque 15N · m)

Part Number Type	Mass (g)	Included Screw		Allowable Load (N)	Unit Price 1~99 pc(s).	Volume Discount Rate 100~200
		Screw	Quantity			
HABL8	120	Hex Socket Head Cap Screw M8x15	1	800		



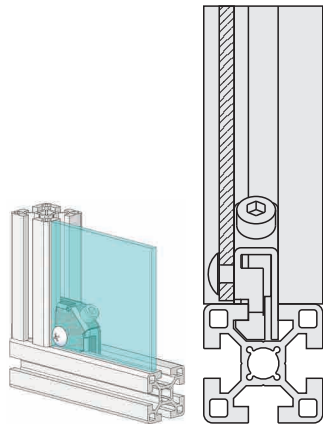
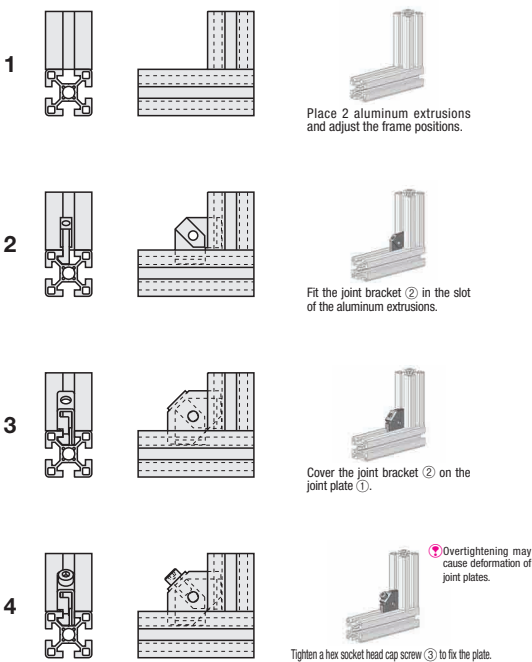
Example

Part Number  
HABL8

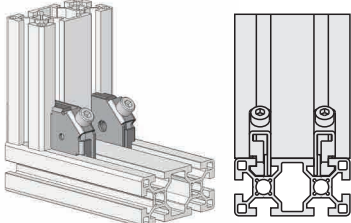
## Connection Method

StepFront View Side View

Sketch Drawing



Holes are tapped on a bracket for cover mounting.



For aluminum extrusions with 2 slots, brackets can be mounted on both sides.