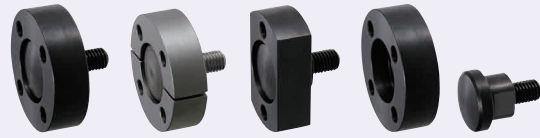


Floating Joints Flange Mounting

[Threaded] Standard Type

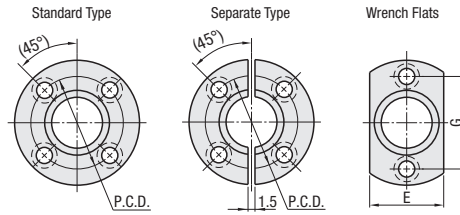
■ Features: Connector can be fixed securely by a flange.



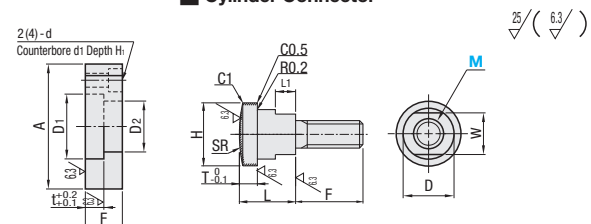
RoHS 10

Set			Type			Material	Hardness		Surface Treatment		
Standard	Separate	Wrench Flats	F Fixed	F Configurable	Flange only		Flange	Connector			
FJMA	FJMB	FJMC	FJCNF	FJCNR	FJA-H	FJB-H	FJC-H	EN 1.1191 Equiv.	40HRC~ 45HRC~	Section from 45 HRC Induction Hardened	Black Oxide
FJMAS	FJMBS	FJMCS	FJCNFS	FJCNRS	FJAS-H	FJBS-H	FJCS-H	EN 1.4037 Equiv.			

Mount Flanges



Cylinder Connector



Ⓢ EN 1.4037 Equiv. Hardened Type may be discolored due to hardening. Ⓢ Refer to Allowable Misalignment on the right-hand page.

Set

Part Number	Type	Mount Flanges										Cylinder Connector										Unit Price									
		M	A	D1	D2	t	F	P.C.D.	d	d1	H1	E	G	MxPitch	F	L	D	H	T	W	L1	SR	FJMA	FJMB	FJMC	FJMAS	FJMBS	FJMCS			
Standard	3	42	18	13	5	10	30	4.5	8	5	24	30	3x0.5	5	14	12	17	5	10	6	40										
FJMA	4												4x0.7	6																	
FJMAS	5												5x0.8	7																	
	6	48	20	15	6	12	34	6	9.5	5.5	28	34	6x1.0	10	16	14	19	6	12	8	50										
Separate	8	51	24	17	8	16	37	7	11	6	30	37	8x1.25	12	20	16	23	8	14	10	60										
FJMB	10	54	28	21	8	16	40	7	11	6	32	40	10x1.5	15	20	20	27	8	17	10	60										
FJMBS	12	70	36	27	10	20	52	10	14	8	42	52	12x1.75	16	25	25	34	10	22	12	100										
	16	90	46	35	12	24	68	12	17.5	10	54	68	16x2.0	18	30	32	43	12	27	15	100										
Wrench Flats	20												20x2.5	25	55	40	52	15	32	18	200										
FJMC	22	106	56	44	15	30	80	14	20	12	66	80	22x2.5	28																	
FJMCS																															

Connector only (See the Set Size Table for detailed sizes.)

Part Number	Type	Mount Flanges			Cylinder Connector			Unit Price		
		M	Fixed	F	FJCNF	FJCNFS	FJCNR	FJCNRS	FJMA	FJMB
	3	5	5-8							
	4	6	5-10							
	5	7	5-12							
	6	10	6-18							
	8	12	10-25							
	10	15	10-25							
	12	16	12-36							
	16	18	15-40							
	20	25	20-60							
	22	28	-							

Flange only (See the Set Size Table for detailed sizes.)

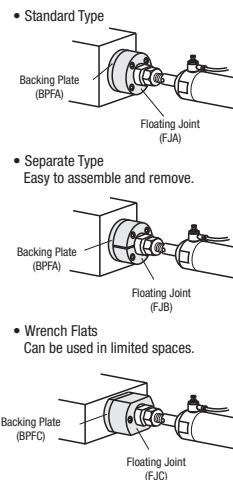
Part Number	Type	Mount Flanges			Cylinder Connector			Unit Price		
		M	FJA-H	FJB-H	FJC-H	FJAS-H	FJBS-H	FJCS-H	FJMA	FJMB
	3									
	4									
	5									
	6									
	8									
	10									
	12									
	16									
	20									
	22									

Ordering Example
 • Connector only F Configurable
 Part Number - F
 FJCNR10 - 15

• Other Than Above
 Part Number
 FJMA10
 FJB-H14

Alterations
 Part Number - F - (AWC)
 FJMA10
 FJCNRS - 12 - NC

Alteration	Flange Cut		Undercut Processing																
	AWC	NC																	
	Cuts four sides of the flange. (Ordering Code) AWC Ⓢ Standard Type only (Not applicable to FJMA22)	Machines an undercut at the base of threads. (Ordering Code) NC Ⓢ Applicable to FJCNR and FJCNRS only.																	
	<table border="1"> <thead> <tr> <th>M</th> <th>K</th> </tr> </thead> <tbody> <tr><td>3, 4</td><td>32</td></tr> <tr><td>5, 6</td><td>36</td></tr> <tr><td>8</td><td>40</td></tr> <tr><td>10</td><td>42</td></tr> <tr><td>12</td><td>54</td></tr> <tr><td>16</td><td>68</td></tr> <tr><td>20, 22</td><td>80</td></tr> </tbody> </table>	M	K	3, 4	32	5, 6	36	8	40	10	42	12	54	16	68	20, 22	80		
M	K																		
3, 4	32																		
5, 6	36																		
8	40																		
10	42																		
12	54																		
16	68																		
20, 22	80																		



Floating Joints Flange Mounting

[Threaded] Space Saving Type

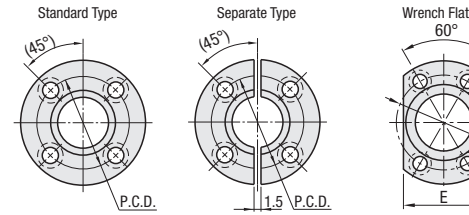
■ Features: Compact Type with small diameter of a mounting screw. Floating Connectors for Air Cylinders.



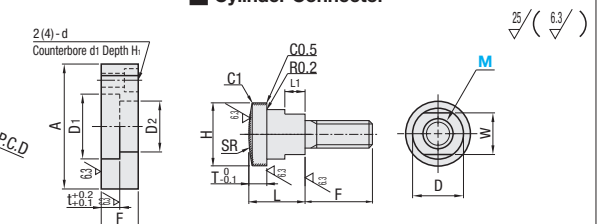
RoHS 10

Set			Type			Material	Hardness		Surface Treatment	
Standard	Separate	Wrench Flats	L Fixed	Standard	Separate		Flange	Connector		
FJUMA	FJUMB	FJUMC	FJUNF	FJUA-H	FJUB-H	FJUC-H	EN 1.1191 Equiv.	40HRC~ 45HRC~	Section from 45 HRC Induction Hardened	Black Oxide
FJUMAS	-	FJUMCS	FJUNFS	FJUAH-H	FJUBH-H	FJUCH-H	EN 1.4037 Equiv.			

Mount Flanges



Cylinder Connector



Ⓢ EN 1.4037 Equiv. Hardened Type may be discolored due to hardening.

Set

Part Number	Type	Mount Flanges										Cylinder Connector										Unit Price								
		M	A	D1	D2	t	F	P.C.D.	d	d1	H1	E	MxPitch	F	L	D	H	T	W	L1	SR	FJUMA	FJUMAS	FJUMB	FJUMC	FJUMCS				
Standard	5												5x0.8	10	14	12	16	5	10	3	50									
FJUMA	6	34	17	13		24		4.5	8	5	22		6x1.0	13																
FJUMAS	8												8x1.25	15	15	16	22		13	4	60									
	10	40	23	17		30					25		10x1.5	18																
Separate	12	52	32	24	5.5	12	40	6	9.5	5.5	34		12x1.75	22	16	22	30	5.5	19		4	100								
FJUMB	16	62	39	31	8	16	48	7	11	6	41		16x2.0	30	20	28	36	8	21											
FJMBS	20												20x2.5	32																
	22	74	46	36	10	20	58	10	14	8	48		22x2.5	35	25	32	42	10	26	5	200									
Wrench Flats																														
FJUMC																														
FJUMCS																														

Connector only (See the Set Size Table for detailed sizes.)

Part Number	Type	Unit Price	
		FJUNF	FJUNFS
	5		
	6		
	8		
	10		
	12		
	16		
	20		
	22		

Flange only (See the Set Size Table for detailed sizes.)

Part Number	Type	Unit Price		
		FJUA-H	FJUB-H	FJUC-H
	5			
	6			
	8			
	10			
	12			
	16			
	20			
	22			

Allowable Misalignment (mm)

M	U
3-10	0.5
12, 14	1
16, 18	1.5
20, 22	2

Ordering Example
 Part Number
 FJUMA5
 FJUBS-H12

Comparison between Standard Shape Type and Space Saving Shape Type (when M=18 Tapped Type)

