



Aluminum Hinges / Aluminum Hinges for Different Extrusion Sizes

CAD Data



Aluminum Hinges with Tabs / Aluminum Hinges with Slotted Holes

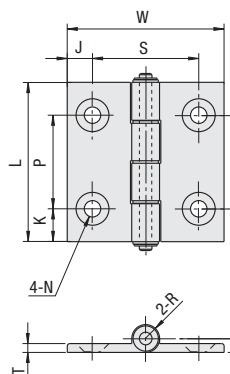
CAD Data

Aluminum Hinges with Tabs
Aluminum Hinges for Different Extrusion Sizes

RoHS



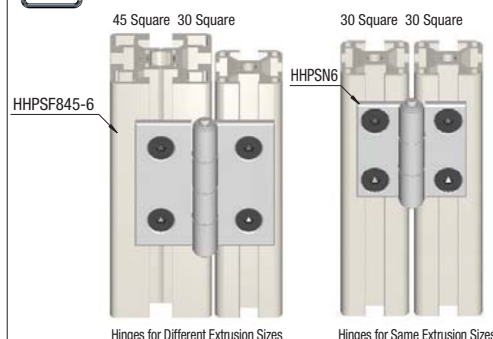
HHPSN (Clear Anodize)
HHPBSN (Black Anodize)
HHPSF (For Different Extrusion Sizes: Clear Anodize)



Material: EN AW-6063/AlMg0,7Si-T5 Bushing: Polyacetal
Surface Treatment: Anodize



Example



Hinges for Different Extrusion Sizes Hinges for Same Extrusion Sizes

-Hinges for Different Extrusion Sizes
HHPSF 6-5: Attaches HFS5-20mm to HFS6-30mm.
HHPBSF8-6: Attaches HFS6-30mm to HFS8-40mm.
HHPSF845-5: Attaches HFS5-30mm to HFS8-45mm.
HHPSF 8-5: Attaches HFS5-20mm to HFS8-40mm.
HHPSF 845-6: Attaches HFS6-30mm to HFS8-45mm.
When the Hinges are mounted to the panels, etc., use the recommended Hinge Nuts on P.725

Part Number	*Allowable Load		Mass g	L	W	K	P	J	S	N		T	E	R	Screws · Nuts			Clear Anodize		Black Anodize		
	No.	kg								N	Through				Counter-sunk	Screws	Quantity	Nuts	Quantity	Qty. 1-8	9-	Qty. 1-8
HHPSN HHPBSN (Black Anodize)	5		22	47	36	11	25	7.5	21	5.5	11	3.5	5	5	Flathead Screw 5-8	2	HNTT5-5	2				
	6	10	98	33	48	8.5	30	8	32	6.5	13	5.5	5.5	5.5	Flathead Screw 6-10	2	HNTT6-6	2				
	8		48	63	62	13	37	10	42	6.5	13				Flathead Screw 6-12	2	HNTT8-6	2				
	8-45	15	147	81	80	10	43	16.5	47			4.5			Flathead Screw 6-15	2	HNTT8-6	2				
HHPSF (For Different Extrusion Sizes)	6-5	10	98	33	47	44.75	8.5	30	10.75	26.5	5.5	11	3.5	5.5	Flathead Screw 5-8	2	HNTT5-5	2				
											6.5	13			Flathead Screw 6-10	2	HNTT6-6	2				
											5.5	11			Flathead Screw 5-8	2	HNTT5-5	2				
	8-5	10	98	48	63	54.25	13	37	15.25	31.5	6.5	13	3.5	5.5	Flathead Screw 6-10	2	HNTT6-6	2				
											5.5	11			Flathead Screw 5-8	2	HNTT5-5	2				
845-5	10	98	81	63	55.5	13	37	14	34		6.5	13	3.5	5.5	Flathead Screw 6-10	2	HNTT6-6	2				
											5.5	11			Flathead Screw 5-8	2	HNTT5-5	2				
8-6	15	147	48	63	62	13	37	12.5	37		6.5	13	3.5	5.5	Flathead Screw 6-10	2	HNTT6-6	2				
											5.5	11			Flathead Screw 6-12	2	HNTT8-6	2				
845-6	15	147	48	63	62	13	37	11.5	39		6.5	13	3.5	5.5	Flathead Screw 6-10	2	HNTT6-6	2				
											5.5	11			Flathead Screw 6-15	2	HNTT8-6	2				

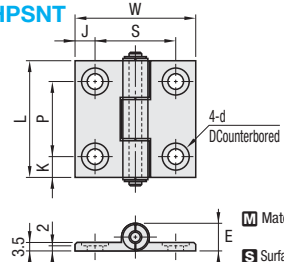
*The allowable load is the value when 2 pieces are used.

Aluminum Hinges Extra Low Head Cap Screw Type

RoHS



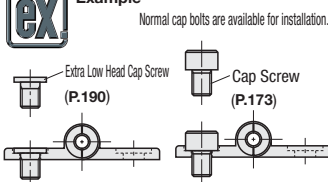
HHPSNT



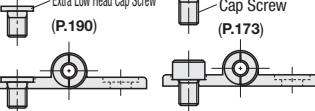
Material: EN AW-6063/AlMg0,7Si Bushing: Polyacetal
Surface Treatment: Clear Anodize



Example



Normal cap bolts are available for installation.



When the Hinges are mounted to the panels, etc., use the recommended Hinge Nuts on P.725

Part Number	*Allowable Load		Mass g	L	W	K	P	J	S	d Through	D Counterbore	E	Screws · Nuts			€ Unit Price		Volume discount Rate	
	No.	kg											N	Screws	Quantity	Nuts	Quantity	Qty. 1-8	9-
HHPSNT	5		22	47	36	11	25	7.5	21	5.5	10	5	CBSA5-6	4	HNTT5-5	4			
	6	10	98	34	48	8.5	30	8	32	6.5	11	5.5	CBSA6-8	4	HNTT6-6	4			
	8		49	63	62	13	37	10	42				CBSA6-10	4	HNTT8-6	4			

*The allowable load is the value when 2 pieces are used.

Order Example Part Number HHPSN6

Alterations Part Number - (SET · SST) HHPBSN6 - SET

Days to Ship 6 Days P87

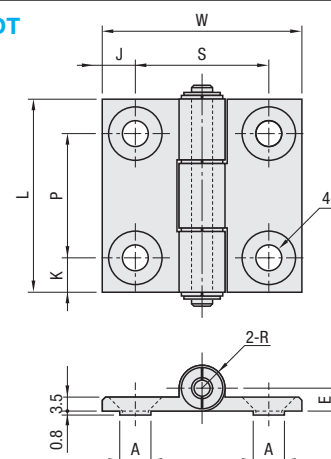
Alterations	Code	Spec.	Hinges	No.	Price Adder		
					SET	SST	
Applicable Screw Nut Set	SET SST (Stainless Steel)	Applicable screws and nuts come in a set. When SST is specified, stainless steel screw and nut are included. (- When SET is specified, the material of the Flathead Screws is 1.7220/34CrMo4 and their surface treatment is Black Oxide.)	HHPSN	5	1,80	2,35	
			HHPBSN	6	1,92	2,90	
				8	2,24	3,20	
				5	7,12	-	
			HHPSNT	6	7,76	-	
				8	7,96	-	
				6-5	845-5	2,08	2,60
				8-5	8-6		
				845-6			

Aluminum Hinges with Tabs

RoHS



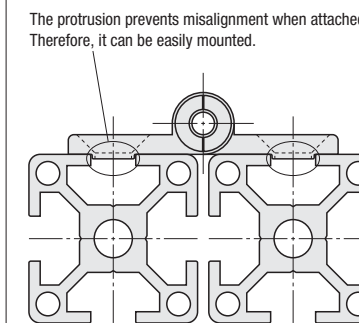
HHPSDT



Material: EN AW-6063/AlMg0,7Si Bushing: Polyacetal
Surface Treatment: Clear Anodize



Example



The protrusion prevents misalignment when attached. Therefore, it can be easily mounted.

When the Hinges are mounted to the panels, etc., use the recommended Hinge Nuts on P.725

Part Number	*Allowable Load		Mass g	L	W	K	P	J	S	N		E	A	R	Screws · Nuts			€ Unit Price		Volume Discount		
	Type	No.								kg	N				Through	Counter-sunk	Screws	Quantity	Nuts	Quantity	Qty. 1-8	9-
HHPSDT	5		23	47	36	11	25	7.5	21	5.5	11	5	5.5	5	Flathead Screw 5-8	4	HNTT5-5	4				
	6	10	98	35	48	8.5	30	8	32	6.5	13	5.5	7.5	5.5	Flathead Screw 6-10	4	HNTT6-6	4				
	8		51	63	62	13	37	10	42						Flathead Screw 6-12	4	HNTT8-6	4				

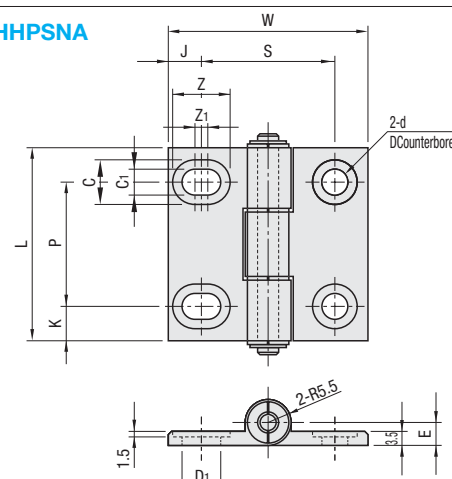
*The allowable load is the value when 2 pieces are used.

Aluminum Hinges with Slotted Holes

RoHS



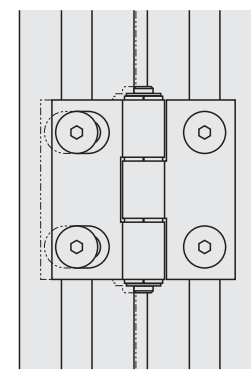
HHPSNA



Material: EN AW-6063/AlMg0,7Si Bushing: Polyacetal
Surface Treatment: Clear Anodize



Example



Slotted mounting holes make it possible to adjust right and left positions.

When the Hinges are mounted to the panels, etc., use the recommended Hinge Nuts on P.725

Part Number	*Allowable Load		Mass g	L	W	K	P	J	S	d Through	D Counter-bore	D1	C	C1	Z	Z1	E	Screws · Nuts			€ Unit Price		Volume Discount	
	Type	No.																kg	N	Screws	Quantity	Nuts	Quantity	Qty. 1-8
HHPSNA	5		22	47	36	11	25	7.5	21	5.5	10	7	10	5.5	11.5	1.5	5	CBSA5-6	4	HNTT5-5	4			
	6	10	98	32	48	8.5	30	8	32	6.5	11	9.5	11	6.5	14	3	5.5	CBSA6-8	4	HNTT6-6	4			
	8		47	63	62	13	37	10	42			11.5	16	5				CBSA6-10	4	HNTT8-6	4			

*The allowable load is the value when 2 pieces are used.

Order Example Part Number HHPSDT6 HHPBSNA6

Alterations Part Number - (SET · SST) HHPSDT6 -

Days to Ship 6 Days P87

Alterations	Code	Spec.	Hinges	No.	Price Adder	
					SET	SST
Applicable Screw Nut Set	SET SST (Stainless Steel)	Applicable screws and nuts come in a set. When specified, stainless steel screw and nut are included. HHPSNA is available for -SET only. (- When SET is specified, the material of the Flathead Screws is 1.7220/34CrMo4 and their surface treatment is Black Oxide.)	HHPSDT	5	1,80	2,35
				6	1,92	2,90
				8	2,24	3,20
				5	7,12	-
			HHPSNA	6	7,76	-
				8	7,96	-