

Dear Sir/Madam,

Thank you for having ordered these products in the past and showed trust in MISUMI.

Today, unfortunately we must notify you about some changes in our product portfolio. Some purchased products will be removed from our online shop on March 31, 2021.

We apologize for any inconvenience this may cause. And we hope that you would consider switching to a replacement product.

Hereafter the list of affected products:

1. Product name:

Miniature Linear Guide Material: Carbon Steel (Refer to enclosed sheet No. 2).

2. Discontinued from:

March 31, 2021

3. Suggested replacement product

Miniature Linear Guide Material: Stainless Steel.

For the suggested replacement product you have to consider that we have a modification in the material: from Carbon Steel to Stainless Steel (Equivalent to SUS440C)

Some additional technical information are reported in the attached sheet.

If you need any further technical assistance to switch from SCM to SUS type, do not hesitate to contact us:

MISUMI Europa GmbH, FA Business Development Department, Technical Support Team;

TEL : +49 69 668173-499 E-Mail : mail.tech@misumi-europe.com

Regards,

Your MISUMI Team

Technical Information sheet

Material Modification, from Carbon Steel to Stainless Steel, of Miniature Linear Guides

Misumi Group Inc. will discontinue the Carbon Steel-Miniature Linear Guides on March 31, 2021.

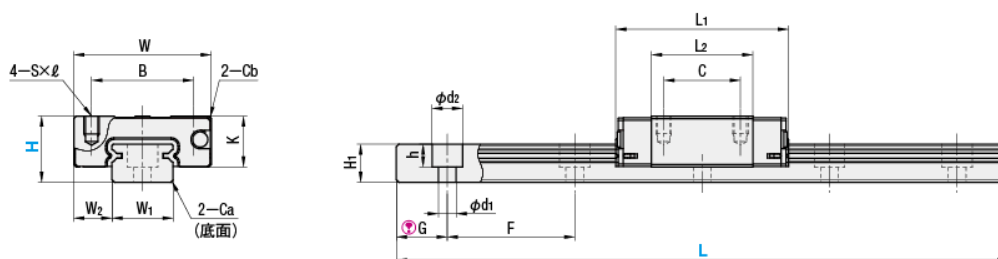
We apologize for any inconvenience this update may cause and we hope that you would consider switching to a replacement product.

Hereafter some additional information for a better comparison:

1. Replacement Product – Modification in Specification

Material will be modified from Carbon Steel to Stainless Steel. There is no modification in specification, allowable load capacity, allowable moment, standard accuracy, and the others.

For instance: S(S)EB10-55 - Example of specification comparison:



Dimension	W	L ₁	B	C	S×ℓ	L ₂	K	W ₁	W ₂	H ₁	d ₁ ×d ₂ ×h	F	G
Carbon Steel (SEB10-55)	20	30	15	10	M3×3	19	7.8	9	5.5	5.5	3.5×6×3.5	20	7.5
Stainless Steel (SSEB10-55)	20	30	15	10	M3×3	19	7.8	9	5.5	5.5	3.5×6×3.5	20	7.5

Allowable Load Capacity and Allowable Moment	Basic Load Capacity		Allowable Static Moment		
	C (Dynamic) kN	Co (Static) kN	M _A N·m	M _B N·m	M _C N·m
Carbon Steel (SEB10-55)	1.5	2.5	5.1	5.1	10.2
Stainless Steel (SSEB10-55)	1.5	2.5	5.1	5.1	10.2

2. How to create a new part number for the replacement product

To modify the model No. to stainless-steel product, just add a [S] to the top of Carbon Steel Products model No. For Low temperature black chrome plating product, please add a [S] next to [R].

Examples:

(1) Normal product

[Carbon Steel] S E B 10 - 55 ⇒ [Stainless Steel] **S** S E B 10 - 55

(2) Low temperature black chrome plating product

[Carbon steel] R E B 10 - 55 ⇒ [Stainless Steel] R **S** E B 10 - 55