

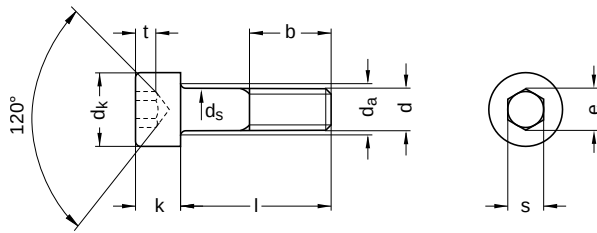
DIN 912 similar to ISO 4762

Cylinder screws

Hexagon socket

Steel 10.9 | bright | Cr(VI)-free | Metric thread

Further information: DIN-standard has been withdrawn | changed nominal lengths | the fine thread has been transferred to ISO 12474



Diameter (d)	b nominal size	da max.	dk		ds		k		e min.	nominal size	s		t min.
			min.	max.	min.	max.	min.	max.					
M 3	18	3.6	5.32	5.5	2.86	3	2.86	3	2.87	2.5	2.52	2.58	1.3
M 4	20	4.7	6.78	7.0	3.82	4	3.82	4	3.44	3.0	3.02	3.08	2.0
M 5	22	5.7	8.28	8.5	4.82	5	4.82	5	4.58	4.0	4.02	4.10	2.5
M 6	24	6.8	9.78	10.0	5.82	6	5.82	6	5.72	5.0	5.02	5.14	3.0
M 8	28	9.2	12.73	13.0	7.78	8	7.78	8	6.86	6.0	6.05	6.14	4.0
M 10	32	11.2	15.73	16.0	9.78	10	9.64	10	9.15	8.0	8.02	8.18	5.0
M 12	36	13.7	17.73	18.0	11.73	12	11.57	12	11.43	10.0	10.02	10.18	6.0
M 14	40	15.7	20.67	21.0	13.73	14	13.57	14	13.72	12.0	12.03	12.21	7.0
M 16	44	17.7	23.67	24.0	15.73	16	15.57	16	16.00	14.0	14.03	14.21	8.0
M 18	48	20.2	26.67	27.0	17.73	18	17.57	18	16.00	14.0	14.03	14.21	9.0
M 20	52	22.4	29.67	30.0	19.67	20	19.48	20	19.44	17.0	17.05	17.23	10.0
M 22	56	24.4	32.61	33.0	21.67	22	21.48	22	19.44	17.0	17.05	17.23	11.0
M 24	60	26.4	35.61	36.0	23.67	24	23.48	24	21.73	19.0	19.06	19.28	12.0
M 27	66	30.4	39.61	40.0	26.67	27	26.48	27	21.73	19.0	19.06	19.28	13.5
M 30	72	33.4	44.61	45.0	29.67	30	29.48	30	25.15	22.0	22.06	22.28	15.5
M 36	84	39.4	53.54	54.0	35.61	36	35.38	36	30.85	27.0	27.06	27.28	19.0

All technical data refer to the measure mm



DIN 912 similar to ISO 4762

Cylinder screws

Hexagon socket

Steel 10.9 | bright | Cr(VI)-free | Metric thread

nominal size	Length (l)	
	min.	max.
6	5.76	6.24
8	7.71	8.29
10	9.71	10.29
12	11.65	12.35
14	13.65	14.35
16	15.65	16.35
18	17.65	18.35
20	19.58	20.42
22	21.59	22.42
25	24.58	25.42
30	29.58	30.42
35	34.50	35.50
40	39.50	40.50
45	44.50	45.50
50	49.50	50.50
55	54.40	55.60
60	59.40	60.60
65	64.40	65.60
70	69.40	70.60
75	74.40	75.60
80	79.40	80.60
85	84.30	85.70

nominal size	Length (l)	
	min.	max.
90	89.30	90.70
100	99.30	100.70
105	104.30	105.70
110	109.30	110.70
115	114.30	115.70
120	119.30	120.70
125	124.20	125.80
130	129.20	130.80
135	134.20	135.80
140	139.20	140.80
150	149.20	150.80
160	159.20	160.80
170	169.20	170.80
180	179.20	180.80
190	189.10	190.90
200	199.10	200.90
210	209.10	210.90
220	219.10	220.90
230	229.10	230.90
240	239.10	240.90
250	249.10	250.90
260	258.95	261.05

nominal size	Length (l)	
	min.	max.
270	268.95	271.05
280	278.95	281.05
290	288.95	291.05
300	298.95	301.05
310	308.95	311.05
320	318.85	321.15
330	328.85	331.15
340	338.85	341.15
350	348.85	351.15
360	358.85	361.15
380	378.85	381.15
400	398.85	401.15
420	418.75	421.25
440	438.75	441.25
450	448.75	451.25
460	458.75	461.25
480	478.75	481.25
500	498.75	501.25
520	518.75	521.25

All technical data refer to the measure mm

