

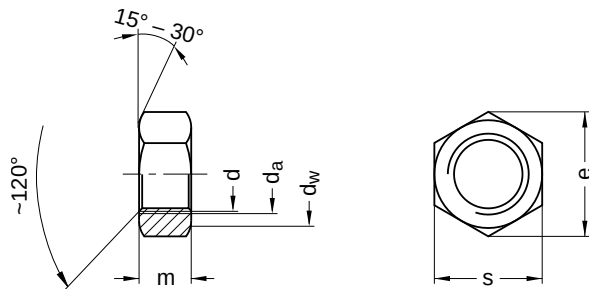
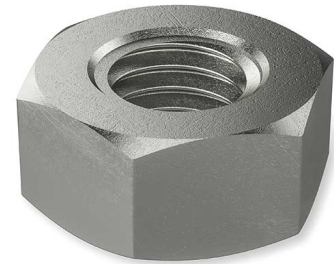
**DIN 934** similar to ISO 4032

## Hexagon nuts

External hex

Stainless steel A2 | Cr(VI)-free | Metric thread

Further information: DIN-standard has been withdrawn | changed spanner widths for M10, M12, M14 and M22 | the fine thread has been transferred to ISO 8673



Diameter (d)	d <sub>a</sub>		d <sub>w</sub>	e	m		s		Pitch (P)
	min.	max.			min.	max.	min.	max.	
M 1	1.0	1.15	2.0	2.71	0.55	0.8	2.40	2.5	0.25
M 1.2	1.2	1.40	2.1	3.28	0.75	1.0	2.90	3.0	0.25
M 1.4	1.4	1.60	2.1	3.28	0.95	1.2	2.90	3.0	0.30
M 1.6	1.6	1.84	2.4	3.41	1.05	1.3	3.02	3.2	0.35
M 2	2.0	2.30	3.2	4.32	1.35	1.6	3.82	4.0	0.40
M 2.5	2.5	2.50	4.1	5.45	1.75	2.0	4.82	5.0	0.45
M 3	3.0	3.45	4.5	6.01	2.15	2.4	5.32	5.5	0.50
M 3.5	3.5	4.00	5.0	6.58	2.55	2.8	5.82	6.0	0.60
M 4	4.0	4.60	5.8	7.66	2.90	3.2	6.78	7.0	0.70
M 5	5.0	5.75	6.8	8.79	3.70	4.0	7.78	8.0	0.80
M 6	6.0	6.75	8.8	11.05	4.70	5.0	9.78	10.0	1.00
M 8	8.0	8.75	11.3	14.38	6.14	6.5	12.73	13.0	1.25
M 10	10.0	10.80	15.3	18.90	7.64	8.0	16.73	17.0	1.50
M 12	12.0	13.00	17.2	21.10	9.64	10.0	18.67	19.0	1.75
M 14	14.0	15.10	20.2	24.49	10.30	11.0	21.67	22.0	2.00
M 16	16.0	17.30	22.2	26.75	12.30	13.0	23.67	24.0	2.00
M 18	18.0	19.50	25.3	29.56	14.30	15.0	26.16	27.0	2.50
M 20	20.0	21.60	28.2	32.95	14.90	16.0	29.16	30.0	2.50
M 22	22.0	23.70	29.5	35.03	16.90	18.0	31.00	32.0	2.50
M 24	24.0	25.90	33.2	39.55	17.70	19.0	35.00	36.0	3.00
M 24x2	24.0	25.90	33.2	39.55	17.70	19.0	35.00	36.0	3.00
M 27	27.0	29.10	38.0	45.20	20.70	22.0	40.00	41.0	3.00
M 30	30.0	32.40	42.7	50.65	22.70	24.0	45.00	46.0	3.50
M 33	33.0	35.60	46.6	55.37	24.70	26.0	49.00	50.0	3.50
M 36	36.0	38.90	51.1	60.79	27.40	29.0	53.80	55.0	4.00
M 39	39.0	42.10	55.9	66.44	29.40	31.0	58.80	60.0	4.00
M 42	42.0	45.40	60.6	71.30	32.40	34.0	63.10	65.0	4.50
M 45	45.0	48.60	64.7	76.95	34.40	36.0	68.10	70.0	4.50
M 48	48.0	51.80	69.4	82.60	36.40	38.0	73.10	75.0	5.00
M 52	52.0	56.20	74.2	88.25	40.40	42.0	78.10	80.0	5.00

All technical data refer to the measure mm

