

FAG

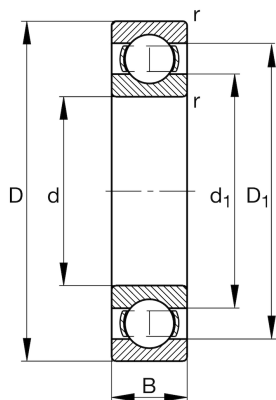
★ 16003-A

Deep groove ball bearing

Schaeffler ID:
0604511140000Deep groove ball bearing 160..-A, single
row, steel sheet metal cage

★ Preferred product

Technical information



Temperature range

T_{\min}	-30 °C	Operating temperature min.
T_{\max}	120 °C	Operating temperature max.
	0,032 kg	Weight

Main Dimensions & Performance Data

d	17 mm	Bore diameter
D	35 mm	Outside diameter
B	8 mm	Width
C_r	6.000 N	Basic dynamic load rating, radial
C_{0r}	2.800 N	Basic static load rating, radial
C_{ur}	199 N	Fatigue load limit, radial
n_G	26.500 1/min	Limiting speed
n_{gr}	17.700 1/min	Reference speed

Dimensions

r_{\min}	0,3 mm	Minimum chamfer dimension
D_1	29,5 mm	Shoulder diameter outer ring
d_1	22,8 mm	Shoulder diameter inner ring

Mounting dimensions

$d_{a\min}$	19 mm	Minimum diameter shaft shoulder
$D_{a\max}$	33 mm	Maximum diameter of housing shoulder
$r_{a\max}$	0,3 mm	Maximum fillet radius

Calculation factors

f_0	14,9	Calculation factor
-------	------	--------------------