

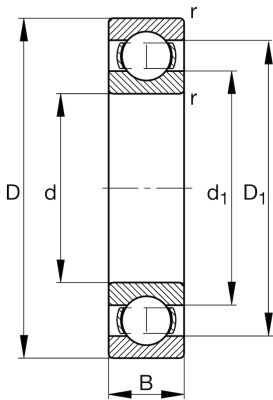
**FAG**★ **16005-A**

Deep groove ball bearing

Schaeffler ID:  
0604572950000Deep groove ball bearing 160..-A, single  
row, steel sheet metal cage

★ Preferred product

## Technical information

**Temperature range**

$T_{\min}$	-30 °C	Operating temperature min.
$T_{\max}$	120 °C	Operating temperature max.
	56 g	Weight

**Main Dimensions & Performance Data**

d	25 mm	Bore diameter
D	47 mm	Outside diameter
B	8 mm	Width
$C_r$	8.860 N	Basic dynamic load rating, radial
$C_{0r}$	5.610 N	Basic static load rating, radial
$C_{ur}$	325 N	Fatigue load limit, radial
$n_G$	22.200 1/min	Limiting speed
$n_{gr}$	11.600 1/min	Reference speed

**Dimensions**

$r_{\min}$	0,3 mm	Minimum chamfer dimension
$D_1$	40,4 mm	Shoulder diameter outer ring
$d_1$	32,5 mm	Shoulder diameter inner ring

**Mounting dimensions**

$d_{a\min}$	27 mm	Minimum diameter shaft shoulder
$D_{a\max}$	45 mm	Maximum diameter of housing shoulder
$r_{a\max}$	0,3 mm	Maximum fillet radius

**Calculation factors**

$f_0$	15,1	Calculation factor
-------	------	--------------------