

FAG

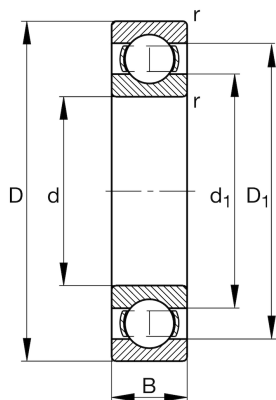
★ 16008-A

Deep groove ball bearing

Schaeffler ID:
0686820690000Deep groove ball bearing 160..-A, single
row, steel sheet metal cage

★ Preferred product

Technical information



Temperature range

T_{\min}	-30 °C	Operating temperature min.
T_{\max}	120 °C	Operating temperature max.
	0,127 kg	Weight

Main Dimensions & Performance Data

d	40 mm	Bore diameter
D	68 mm	Outside diameter
B	9 mm	Width
C_r	12.620 N	Basic dynamic load rating, radial
C_{0r}	9.650 N	Basic static load rating, radial
C_{ur}	600 N	Fatigue load limit, radial
n_G	15.200 1/min	Limiting speed
n_{gr}	7.800 1/min	Reference speed

Dimensions

r_{\min}	0,3 mm	Minimum chamfer dimension
D_1	58,4 mm	Shoulder diameter outer ring
d_1	49,7 mm	Shoulder diameter inner ring

Mounting dimensions

$d_{a\min}$	42 mm	Minimum diameter shaft shoulder
$D_{a\max}$	66 mm	Maximum diameter of housing shoulder
$r_{a\max}$	0,3 mm	Maximum fillet radius

Calculation factors

f_0	16	Calculation factor
-------	----	--------------------