

FAG

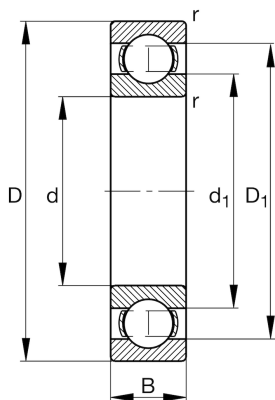
## ★ 16009-A

Deep groove ball bearing

Schaeffler ID:  
0686821150000Deep groove ball bearing 160..-A, single  
row, steel sheet metal cage

★ Preferred product

## Technical information



## Temperature range

$T_{\min}$	-30 °C	Operating temperature min.
$T_{\max}$	120 °C	Operating temperature max.
	0,16 kg	Weight

## Main Dimensions &amp; Performance Data

d	45 mm	Bore diameter
D	75 mm	Outside diameter
B	10 mm	Width
$C_r$	15.540 N	Basic dynamic load rating, radial
$C_{0r}$	12.250 N	Basic static load rating, radial
$C_{ur}$	720 N	Fatigue load limit, radial
$n_G$	13.100 1/min	Limiting speed
$n_{gr}$	6.900 1/min	Reference speed

## Dimensions

$r_{\min}$	0,6 mm	Minimum chamfer dimension
$D_1$	67 mm	Shoulder diameter outer ring
$d_1$	57 mm	Shoulder diameter inner ring

## Mounting dimensions

$d_{a\min}$	48,2 mm	Minimum diameter shaft shoulder
$D_{a\max}$	71,8 mm	Maximum diameter of housing shoulder
$r_{a\max}$	0,6 mm	Maximum fillet radius

## Calculation factors

$f_0$	16	Calculation factor
-------	----	--------------------