



FAG

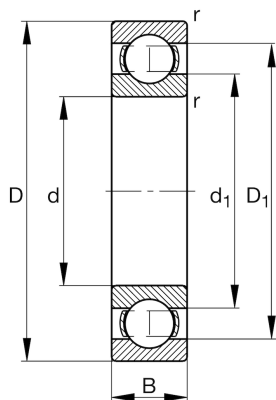
★ 16011-A

Deep groove ball bearing

Schaeffler ID:
0683797140000Deep groove ball bearing 160..-A, single
row, steel sheet metal cage

★ Preferred product

Technical information



Temperature range

T_{\min}	-30 °C	Operating temperature min.
T_{\max}	120 °C	Operating temperature max.
	0,259 kg	Weight

Main Dimensions & Performance Data

d	55 mm	Bore diameter
D	90 mm	Outside diameter
B	11 mm	Width
C_r	15.990 N	Basic dynamic load rating, radial
C_{0r}	13.230 N	Basic static load rating, radial
C_{ur}	940 N	Fatigue load limit, radial
n_G	10.900 1/min	Limiting speed
n_{gr}	6.000 1/min	Reference speed

Dimensions

r_{\min}	0,6 mm	Minimum chamfer dimension
D_1	78,6 mm	Shoulder diameter outer ring
d_1	69,6 mm	Shoulder diameter inner ring

Mounting dimensions

$d_{a\min}$	58,2 mm	Minimum diameter shaft shoulder
$D_{a\max}$	86,8 mm	Maximum diameter of housing shoulder
$r_{a\max}$	0,6 mm	Maximum fillet radius

Calculation factors

f_0	13,1	Calculation factor
-------	------	--------------------