

FAG

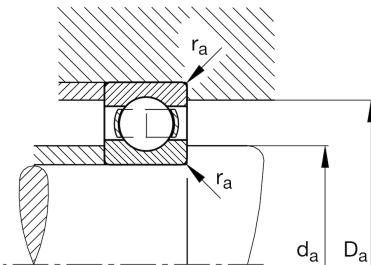
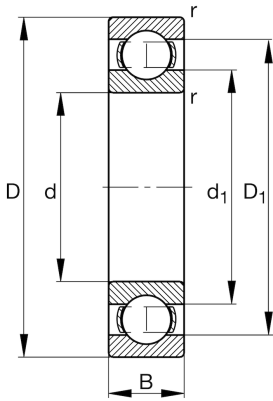
★ 16014

Deep groove ball bearing

Schaeffler ID:
0167011510000Deep groove ball bearing 160, single row,
steel sheet metal cage

★ Preferred product

Technical information



Temperature range

T_{\min}	-30 °C	Operating temperature min.
T_{\max}	150 °C	Operating temperature max.
	0,004 kg	Weight

Main Dimensions & Performance Data

d	70 mm	Bore diameter
D	110 mm	Outside diameter
B	13 mm	Width
C_r	29.500 N	Basic dynamic load rating, radial
C_{0r}	25.000 N	Basic static load rating, radial
C_{ur}	1.260 N	Fatigue load limit, radial
n_G	8.900 1/min	Limiting speed
n_{gr}	5.300 1/min	Reference speed

Dimensions

r_{\min}	0,6 mm	Minimum chamfer dimension
D_1	96,2 mm	Shoulder diameter outer ring
d_1	83,7 mm	Shoulder diameter inner ring

Mounting dimensions

$d_{a\min}$	73,2 mm	Minimum diameter shaft shoulder
$D_{a\max}$	106,8 mm	Maximum diameter of housing shoulder
$r_{a\max}$	0,6 mm	Maximum fillet radius

Calculation factors

f_0	16,2	Calculation factor
-------	------	--------------------