

FAG

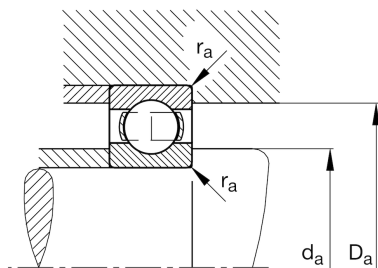
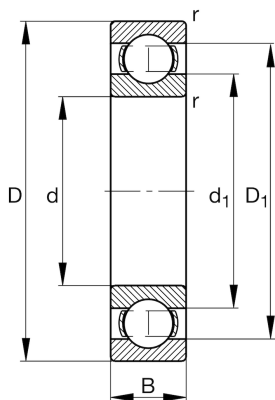
★ 16017

Deep groove ball bearing

Schaeffler ID:
0167011860000Deep groove ball bearing 160, single row,
steel sheet metal cage

★ Preferred product

Technical information



Temperature range

T_{\min}	-30 °C	Operating temperature min.
T_{\max}	150 °C	Operating temperature max.
	0,666 kg	Weight

Main Dimensions & Performance Data

d	85 mm	Bore diameter
D	130 mm	Outside diameter
B	14 mm	Width
C_r	36.000 N	Basic dynamic load rating, radial
C_{0r}	33.500 N	Basic static load rating, radial
C_{ur}	1.900 N	Fatigue load limit, radial
n_G	7.400 1/min	Limiting speed
n_{gr}	4.400 1/min	Reference speed

Dimensions

r_{\min}	0,6 mm	Minimum chamfer dimension
D_1	114,7 mm	Shoulder diameter outer ring
d_1	100,9 mm	Shoulder diameter inner ring

Mounting dimensions

$d_{a\min}$	88,2 mm	Minimum diameter shaft shoulder
$D_{a\max}$	126,8 mm	Maximum diameter of housing shoulder
$r_{a\max}$	0,6 mm	Maximum fillet radius

Calculation factors

f_0	16,6	Calculation factor
-------	------	--------------------