

FAG

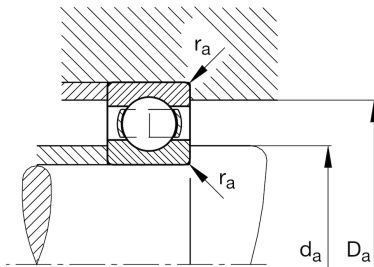
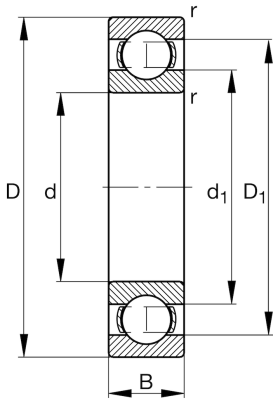
★ 16034

Deep groove ball bearing

Schaeffler ID:
0167013210000Deep groove ball bearing 160, single row,
steel sheet metal cage

★ Preferred product

Technical information



Temperature range

T_{\min}	-30 °C	Operating temperature min.
T_{\max}	200 °C	Operating temperature max.
	5,15 kg	Weight

Main Dimensions & Performance Data

d	170 mm	Bore diameter
D	260 mm	Outside diameter
B	28 mm	Width
C_r	131.000 N	Basic dynamic load rating, radial
C_{0r}	136.000 N	Basic static load rating, radial
C_{ur}	5.600 N	Fatigue load limit, radial
n_G	3.500 1/min	Limiting speed
n_{gr}	2.850 1/min	Reference speed

Dimensions

r_{\min}	1,5 mm	Minimum chamfer dimension
D_1	228,6 mm	Shoulder diameter outer ring
d_1	202,3 mm	Shoulder diameter inner ring

Mounting dimensions

$d_{a \min}$	177 mm	Minimum diameter shaft shoulder
$D_{a \max}$	253 mm	Maximum diameter of housing shoulder
$r_{a \max}$	1,5 mm	Maximum fillet radius

Calculation factors

f_0	16,5	Calculation factor
-------	------	--------------------