



FAG

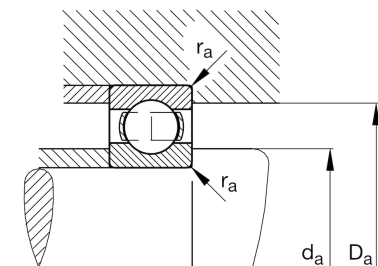
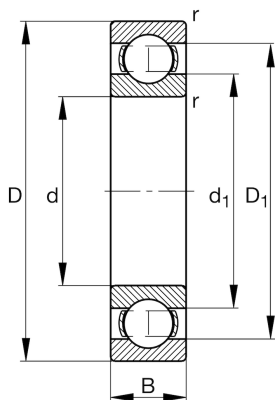
★ 16036

Deep groove ball bearing

Schaeffler ID:
0190115710000Deep groove ball bearing 160, single row,
steel sheet metal cage

★ Preferred product

Technical information



Temperature range

T_{\min}	-30 °C	Operating temperature min.
T_{\max}	200 °C	Operating temperature max.
	6,92 kg	Weight

Main Dimensions & Performance Data

d	180 mm	Bore diameter
D	280 mm	Outside diameter
B	31 mm	Width
C_r	140.000 N	Basic dynamic load rating, radial
C_{0r}	146.000 N	Basic static load rating, radial
C_{ur}	5.300 N	Fatigue load limit, radial
n_G	3.350 1/min	Limiting speed
n_{gr}	2.950 1/min	Reference speed

Dimensions

r_{\min}	2 mm	Minimum chamfer dimension
D_1	238,8 mm	Shoulder diameter outer ring
d_1	211,9 mm	Shoulder diameter inner ring

Mounting dimensions

$d_{a\min}$	188,8 mm	Minimum diameter shaft shoulder
$D_{a\max}$	271,2 mm	Maximum diameter of housing shoulder
$r_{a\max}$	2 mm	Maximum fillet radius

Calculation factors

f_0	16,4	Calculation factor
-------	------	--------------------