



FAG

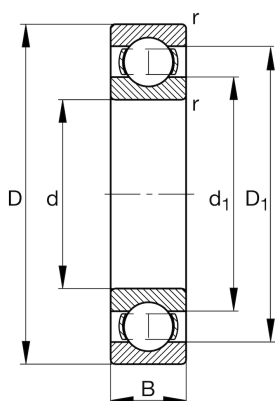
★ 16038

Deep groove ball bearing

Schaeffler ID:
0167013480000Deep groove ball bearing 160, single row,
steel sheet metal cage

★ Preferred product

Technical information



Temperature range

T_{\min}	-30 °C	Operating temperature min.
T_{\max}	200 °C	Operating temperature max.
	7,04 kg	Weight

Main Dimensions & Performance Data

d	190 mm	Bore diameter
D	290 mm	Outside diameter
B	31 mm	Width
C_r	158.000 N	Basic dynamic load rating, radial
C_{0r}	168.000 N	Basic static load rating, radial
C_{ur}	6.400 N	Fatigue load limit, radial
n_G	3.100 1/min	Limiting speed
n_{gr}	2.650 1/min	Reference speed

Dimensions

r_{\min}	2 mm	Minimum chamfer dimension
D_1	255,3 mm	Shoulder diameter outer ring
d_1	225,7 mm	Shoulder diameter inner ring

Mounting dimensions

$d_{a\min}$	198,8 mm	Minimum diameter shaft shoulder
$D_{a\max}$	281,2 mm	Maximum diameter of housing shoulder
$r_{a\max}$	2 mm	Maximum fillet radius

Calculation factors

f_0	16,5	Calculation factor
-------	------	--------------------