



FAG

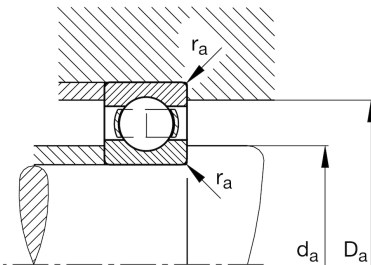
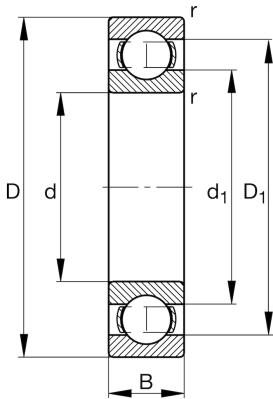
★ 6021

Deep groove ball bearing

Schaeffler ID:
0167184020000Deep groove ball bearing 60, single row,
steel sheet metal cage

★ Preferred product

Technical information



Temperature range

T_{\min}	-30 °C	Operating temperature min.
T_{\max}	150 °C	Operating temperature max.
	1,67 kg	Weight

Main Dimensions & Performance Data

d	105 mm	Bore diameter
D	160 mm	Outside diameter
B	26 mm	Width
C_r	75.000 N	Basic dynamic load rating, radial
C_{0r}	64.000 N	Basic static load rating, radial
C_{ur}	3.550 N	Fatigue load limit, radial
n_G	5.700 1/min	Limiting speed
n_{gr}	4.950 1/min	Reference speed

Dimensions

r_{\min}	2 mm	Minimum chamfer dimension
D_1	142,5 mm	Shoulder diameter outer ring
d_1	122,1 mm	Shoulder diameter inner ring

Mounting dimensions

$d_{a\min}$	113,8 mm	Minimum diameter shaft shoulder
$D_{a\max}$	151,2 mm	Maximum diameter of housing shoulder
$r_{a\max}$	2 mm	Maximum fillet radius

Calculation factors

f_0	15,7	Calculation factor
-------	------	--------------------