

FAG

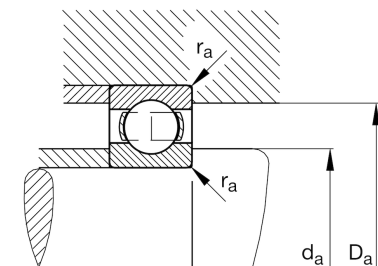
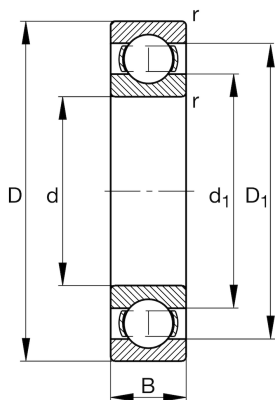
★ 6022

Deep groove ball bearing

Schaeffler ID:
0167184450000Deep groove ball bearing 60, single row,
steel sheet metal cage

★ Preferred product

Technical information



Temperature range

| | | |
|------------|---------|----------------------------|
| T_{\min} | -30 °C | Operating temperature min. |
| T_{\max} | 150 °C | Operating temperature max. |
| | 2,06 kg | Weight |

Main Dimensions & Performance Data

| | | |
|----------|-------------|-----------------------------------|
| d | 110 mm | Bore diameter |
| D | 170 mm | Outside diameter |
| B | 28 mm | Width |
| C_r | 85.000 N | Basic dynamic load rating, radial |
| C_{0r} | 71.000 N | Basic static load rating, radial |
| C_{ur} | 3.550 N | Fatigue load limit, radial |
| n_G | 5.300 1/min | Limiting speed |
| n_{gr} | 4.850 1/min | Reference speed |

Dimensions

| | | |
|------------|----------|------------------------------|
| r_{\min} | 2 mm | Minimum chamfer dimension |
| D_1 | 150,9 mm | Shoulder diameter outer ring |
| d_1 | 129,2 mm | Shoulder diameter inner ring |

Mounting dimensions

| | | |
|-------------|----------|--------------------------------------|
| $d_{a\min}$ | 118,8 mm | Minimum diameter shaft shoulder |
| $D_{a\max}$ | 161,2 mm | Maximum diameter of housing shoulder |
| $r_{a\max}$ | 2 mm | Maximum fillet radius |

Calculation factors

| | | |
|-------|------|--------------------|
| f_0 | 15,7 | Calculation factor |
|-------|------|--------------------|