



FAG

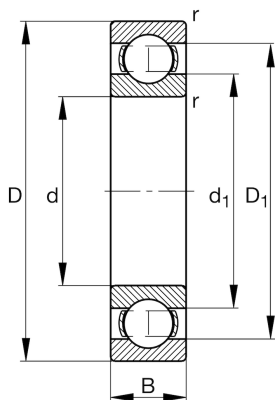
## ★ 6028

## Deep groove ball bearing

Schaeffler ID:  
0167186150000Deep groove ball bearing 60, single row,  
steel sheet metal cage

★ Preferred product

## Technical information



## Temperature range

$T_{\min}$	-30 °C	Operating temperature min.
$T_{\max}$	150 °C	Operating temperature max.
	3,57 kg	Weight

## Main Dimensions &amp; Performance Data

d	140 mm	Bore diameter
D	210 mm	Outside diameter
B	33 mm	Width
$C_r$	117.000 N	Basic dynamic load rating, radial
$C_{0r}$	109.000 N	Basic static load rating, radial
$C_{ur}$	5.100 N	Fatigue load limit, radial
$n_G$	4.250 1/min	Limiting speed
$n_{gr}$	4.050 1/min	Reference speed

## Dimensions

$r_{\min}$	2 mm	Minimum chamfer dimension
$D_1$	187,5 mm	Shoulder diameter outer ring
$d_1$	162,3 mm	Shoulder diameter inner ring

## Mounting dimensions

$d_{a\min}$	148,8 mm	Minimum diameter shaft shoulder
$D_{a\max}$	201,2 mm	Maximum diameter of housing shoulder
$r_{a\max}$	2 mm	Maximum fillet radius

## Calculation factors

$f_0$	16	Calculation factor
-------	----	--------------------