

FAG

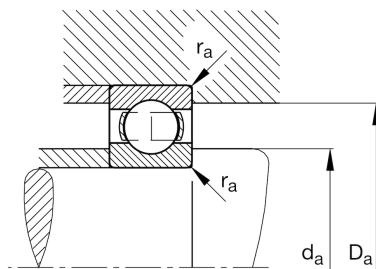
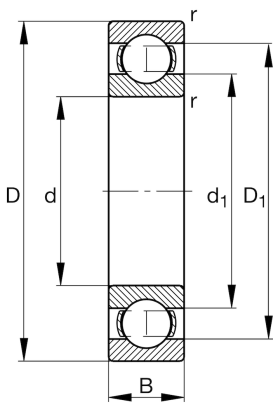
★ 6052-M

Deep groove ball bearing

Schaeffler ID:
0167187980000Deep groove ball bearing 60...-M, single
row, solid brass cage

★ Preferred product

Technical information



Temperature range

| | | |
|------------|--------|----------------------------|
| T_{\min} | -30 °C | Operating temperature min. |
| T_{\max} | 200 °C | Operating temperature max. |
| | 37 kg | Weight |

Main Dimensions & Performance Data

| | | |
|----------|-------------|-----------------------------------|
| d | 260 mm | Bore diameter |
| D | 400 mm | Outside diameter |
| B | 65 mm | Width |
| C_r | 310.000 N | Basic dynamic load rating, radial |
| C_{0r} | 405.000 N | Basic static load rating, radial |
| C_{ur} | 14.300 N | Fatigue load limit, radial |
| n_G | 2.750 1/min | Limiting speed |
| n_{gr} | 2.250 1/min | Reference speed |

Dimensions

| | | |
|------------|----------|------------------------------|
| r_{\min} | 4 mm | Minimum chamfer dimension |
| D_1 | 357 mm | Shoulder diameter outer ring |
| d_1 | 304,6 mm | Shoulder diameter inner ring |

Mounting dimensions

| | | |
|-------------|----------|--------------------------------------|
| $d_{a\min}$ | 274,6 mm | Minimum diameter shaft shoulder |
| $D_{a\max}$ | 385,4 mm | Maximum diameter of housing shoulder |
| $r_{a\max}$ | 3 mm | Maximum fillet radius |

Calculation factors

| | | |
|-------|------|--------------------|
| f_0 | 15,7 | Calculation factor |
|-------|------|--------------------|