**FAG**★ **6010-2Z**

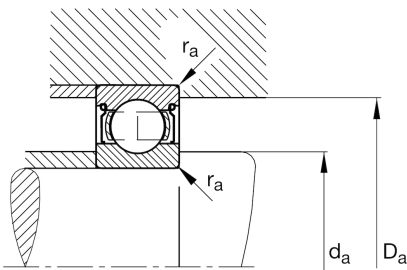
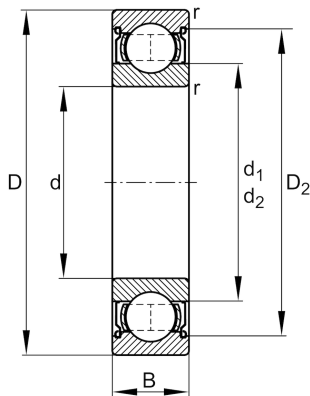
Deep groove ball bearing

Schaeffler ID:  
0167176940000

Deep groove ball bearing 60...-2Z, single row, shields, steel sheet metal cage

★ Preferred product

## Technical information

**Temperature range**

$T_{\min}$	-20 °C	Operating temperature min.
$T_{\max}$	120 °C	Operating temperature max.
	0,262 kg	Weight

**Main Dimensions & Performance Data**

d	50 mm	Bore diameter
D	80 mm	Outside diameter
B	16 mm	Width
$C_r$	22.000 N	Basic dynamic load rating, radial
$C_{0r}$	15.800 N	Basic static load rating, radial
$C_{ur}$	800 N	Fatigue load limit, radial
$n_G$	10.400 1/min	Limiting speed
$n_{gr}$	8.900 1/min	Reference speed

**Dimensions**

$r_{\min}$	1 mm	Minimum chamfer dimension
$D_2$	72,9 mm	Caliber diameter outer ring
$d_1$	59,8 mm	Shoulder diameter inner ring

**Mounting dimensions**

$d_{a\min}$	54,6 mm	Minimum diameter shaft shoulder
$D_{a\max}$	75,4 mm	Maximum diameter of housing shoulder
$r_{a\max}$	1 mm	Maximum fillet radius

**Calculation factors**

$f_0$	15,6	Calculation factor
-------	------	--------------------