

FAG

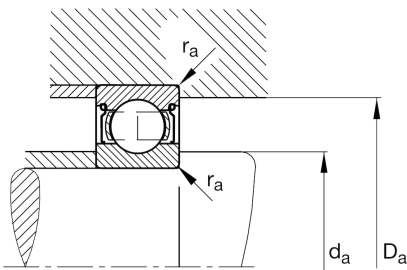
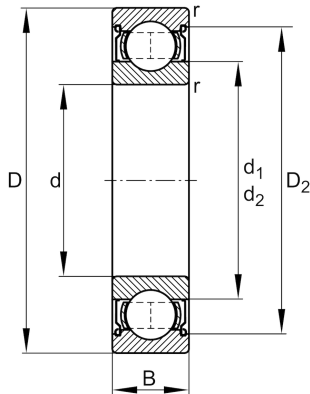
## ★ 6014-2Z

Deep groove ball bearing

Schaeffler ID:  
0167180460000Deep groove ball bearing 60...-2Z, single  
row, shields, steel sheet metal cage

★ Preferred product

## Technical information



## Temperature range

$T_{\min}$	-20 °C	Operating temperature min.
$T_{\max}$	120 °C	Operating temperature max.
	0,596 kg	Weight

## Main Dimensions &amp; Performance Data

d	70 mm	Bore diameter
D	110 mm	Outside diameter
B	20 mm	Width
$C_r$	40.500 N	Basic dynamic load rating, radial
$C_{0r}$	31.000 N	Basic static load rating, radial
$C_{ur}$	1.900 N	Fatigue load limit, radial
$n_G$	7.300 1/min	Limiting speed
$n_{gr}$	6.800 1/min	Reference speed

## Dimensions

$r_{\min}$	1,1 mm	Minimum chamfer dimension
$D_2$	100 mm	Caliber diameter outer ring
$d_1$	82,8 mm	Shoulder diameter inner ring

## Mounting dimensions

$d_{a\min}$	76 mm	Minimum diameter shaft shoulder
$D_{a\max}$	104 mm	Maximum diameter of housing shoulder
$r_{a\max}$	1 mm	Maximum fillet radius

## Calculation factors

$f_0$	15,6	Calculation factor
-------	------	--------------------