**FAG**★ **6028-2Z**

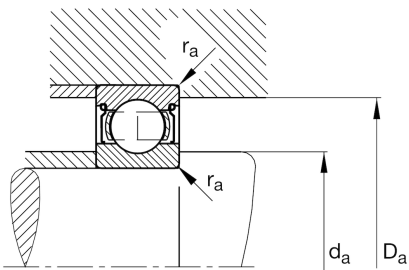
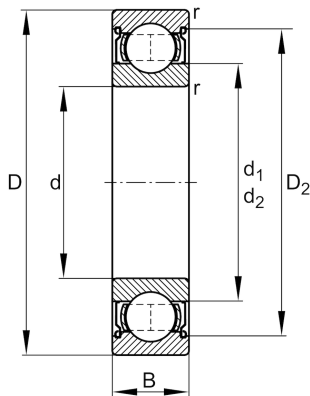
Deep groove ball bearing

Schaeffler ID:
0167186230000

Deep groove ball bearing 60...-2Z, single row, shields, steel sheet metal cage

★ Preferred product

Technical information

**Temperature range**

T_{\min}	-20 °C	Operating temperature min.
T_{\max}	120 °C	Operating temperature max.
	3,56 kg	Weight

Main Dimensions & Performance Data

d	140 mm	Bore diameter
D	210 mm	Outside diameter
B	33 mm	Width
C_r	117.000 N	Basic dynamic load rating, radial
C_{0r}	109.000 N	Basic static load rating, radial
C_{ur}	5.100 N	Fatigue load limit, radial
n_G	3.600 1/min	Limiting speed
n_{gr}	4.050 1/min	Reference speed

Dimensions

r_{\min}	2 mm	Minimum chamfer dimension
D_2	191,3 mm	Caliber diameter outer ring
d_1	161,9 mm	Shoulder diameter inner ring

Mounting dimensions

$d_{a\min}$	148,8 mm	Minimum diameter shaft shoulder
$D_{a\max}$	201,2 mm	Maximum diameter of housing shoulder
$r_{a\max}$	2 mm	Maximum fillet radius

Calculation factors

f_0	16	Calculation factor
-------	----	--------------------