



FAG

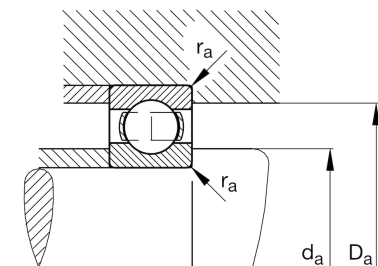
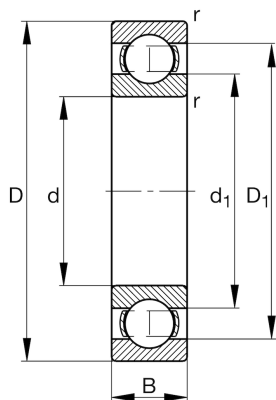
## ★ 61810-Y

Deep groove ball bearing

Schaeffler ID:  
0096194020000Deep groove ball bearing 618..-Y, single  
row, brass sheet metal cage

★ Preferred product

## Technical information



## Temperature range

$T_{\min}$	-30 °C	Operating temperature min.
$T_{\max}$	120 °C	Operating temperature max.
	0,052 kg	Weight

## Main Dimensions &amp; Performance Data

d	50 mm	Bore diameter
D	65 mm	Outside diameter
B	7 mm	Width
$C_r$	7.200 N	Basic dynamic load rating, radial
$C_{0r}$	6.300 N	Basic static load rating, radial
$C_{ur}$	440 N	Fatigue load limit, radial
$n_G$	19.700 1/min	Limiting speed
$n_{gr}$	6.400 1/min	Reference speed

## Dimensions

$r_{\min}$	0,3 mm	Minimum chamfer dimension
$D_1$	60,1 mm	Shoulder diameter outer ring
$d_1$	55,1 mm	Shoulder diameter inner ring

## Mounting dimensions

$d_{a\min}$	52 mm	Minimum diameter shaft shoulder
$D_{a\max}$	63 mm	Maximum diameter of housing shoulder
$r_{a\max}$	0,3 mm	Maximum fillet radius

## Calculation factors

$f_0$	16	Calculation factor
-------	----	--------------------