

FAG

★ 61813-Y

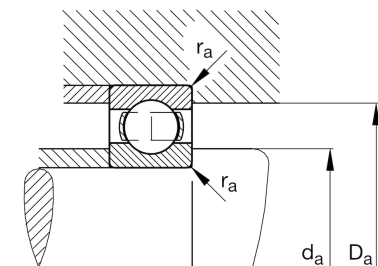
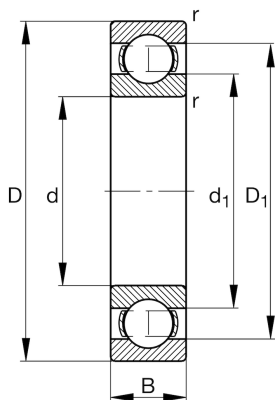
Deep groove ball bearing

Schaeffler ID:
0797506050000

Deep groove ball bearing 618..-Y, single row, brass sheet metal cage

★ Preferred product

Technical information



Temperature range

T_{\min}	-30 °C	Operating temperature min.
T_{\max}	120 °C	Operating temperature max.
	0,136 kg	Weight

Main Dimensions & Performance Data

d	65 mm	Bore diameter
D	85 mm	Outside diameter
B	10 mm	Width
C_r	13.000 N	Basic dynamic load rating, radial
C_{0r}	12.000 N	Basic static load rating, radial
C_{ur}	780 N	Fatigue load limit, radial
n_G	14.700 1/min	Limiting speed
n_{gr}	5.700 1/min	Reference speed

Dimensions

r_{\min}	0,6 mm	Minimum chamfer dimension
D_1	78,6 mm	Shoulder diameter outer ring
d_1	71,6 mm	Shoulder diameter inner ring

Mounting dimensions

$d_{a\min}$	68,2 mm	Minimum diameter shaft shoulder
$D_{a\max}$	81,8 mm	Maximum diameter of housing shoulder
$r_{a\max}$	0,6 mm	Maximum fillet radius

Calculation factors

f_0	16,2	Calculation factor
-------	------	--------------------