

FAG

★ 61822-Y

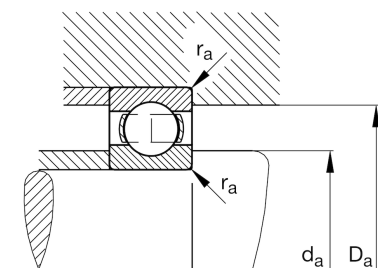
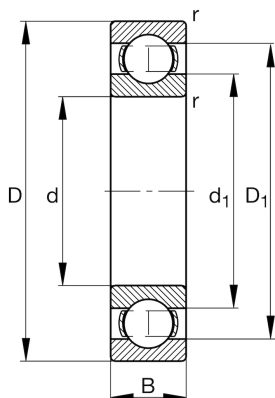
Deep groove ball bearing

Schaeffler ID:
0096199170000

Deep groove ball bearing 618..-Y, single row, brass sheet metal cage

★ Preferred product

Technical information



Temperature range

T_{\min}	-30 °C	Operating temperature min.
T_{\max}	150 °C	Operating temperature max.
	0,499 kg	Weight

Main Dimensions & Performance Data

d	110 mm	Bore diameter
D	140 mm	Outside diameter
B	16 mm	Width
C_r	30.000 N	Basic dynamic load rating, radial
C_{0r}	30.500 N	Basic static load rating, radial
C_{ur}	1.650 N	Fatigue load limit, radial
n_G	8.500 1/min	Limiting speed
n_{gr}	4.100 1/min	Reference speed

Dimensions

r_{\min}	1 mm	Minimum chamfer dimension
D_1	130,6 mm	Shoulder diameter outer ring
d_1	119,7 mm	Shoulder diameter inner ring

Mounting dimensions

$d_{a\min}$	114,6 mm	Minimum diameter shaft shoulder
$D_{a\max}$	135,4 mm	Maximum diameter of housing shoulder
$r_{a\max}$	1 mm	Maximum fillet radius

Calculation factors

f_0	16	Calculation factor
-------	----	--------------------