



FAG

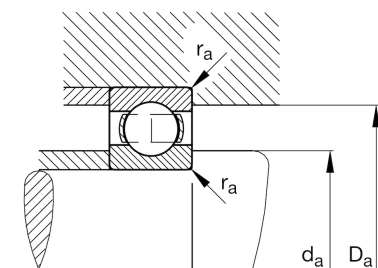
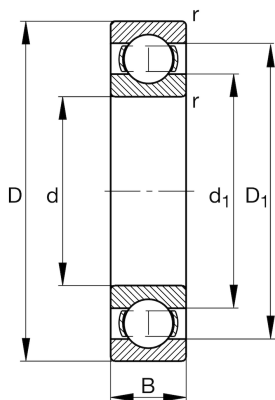
## ★ 61836

## Deep groove ball bearing

Schaeffler ID:  
0167191580000Deep groove ball bearing 618, single row,  
steel sheet metal cage

★ Preferred product

## Technical information



## Temperature range

$T_{\min}$	-30 °C	Operating temperature min.
$T_{\max}$	150 °C	Operating temperature max.
	1,779 kg	Weight

## Main Dimensions &amp; Performance Data

d	180 mm	Bore diameter
D	225 mm	Outside diameter
B	22 mm	Width
$C_r$	66.000 N	Basic dynamic load rating, radial
$C_{0r}$	76.000 N	Basic static load rating, radial
$C_{ur}$	2.950 N	Fatigue load limit, radial
$n_G$	3.900 1/min	Limiting speed
$n_{gr}$	2.750 1/min	Reference speed

## Dimensions

$r_{\min}$	1,1 mm	Minimum chamfer dimension
$D_1$	211,4 mm	Shoulder diameter outer ring
$d_1$	194,4 mm	Shoulder diameter inner ring

## Mounting dimensions

$d_{a\min}$	186 mm	Minimum diameter shaft shoulder
$D_{a\max}$	219 mm	Maximum diameter of housing shoulder
$r_{a\max}$	1 mm	Maximum fillet radius

## Calculation factors

$f_0$	16,1	Calculation factor
-------	------	--------------------