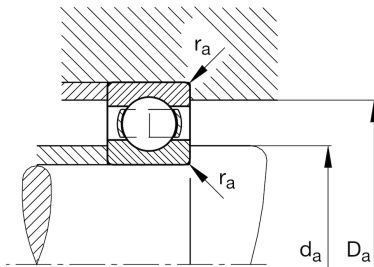
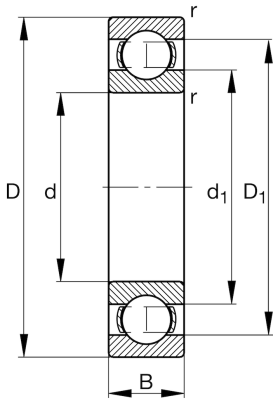
**FAG**★ **61840**

Deep groove ball bearing

Schaeffler ID:
0190975900000Deep groove ball bearing 618, single row,
steel sheet metal cage

★ Preferred product

Technical information



Temperature range

T_{\min}	-30 °C	Operating temperature min.
T_{\max}	200 °C	Operating temperature max.
	2,28 kg	Weight

Main Dimensions & Performance Data

d	200 mm	Bore diameter
D	250 mm	Outside diameter
B	24 mm	Width
C_r	74.000 N	Basic dynamic load rating, radial
C_{0r}	88.000 N	Basic static load rating, radial
C_{ur}	3.450 N	Fatigue load limit, radial
n_G	3.500 1/min	Limiting speed
n_{gr}	2.550 1/min	Reference speed

Dimensions

r_{\min}	1,5 mm	Minimum chamfer dimension
D_1	233,8 mm	Shoulder diameter outer ring
d_1	216,7 mm	Shoulder diameter inner ring

Mounting dimensions

$d_{a\min}$	207 mm	Minimum diameter shaft shoulder
$D_{a\max}$	243 mm	Maximum diameter of housing shoulder
$r_{a\max}$	1,5 mm	Maximum fillet radius

Calculation factors

f_0	16	Calculation factor
-------	----	--------------------