



FAG

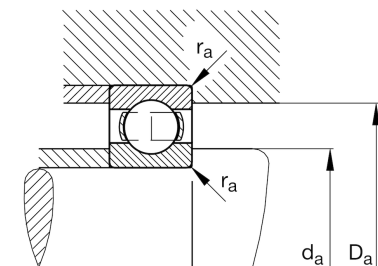
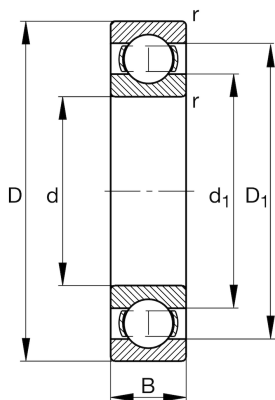
★ 61844

Deep groove ball bearing

Schaeffler ID:
0190976460000Deep groove ball bearing 618, single row,
steel sheet metal cage

★ Preferred product

Technical information



Temperature range

T_{\min}	-30 °C	Operating temperature min.
T_{\max}	200 °C	Operating temperature max.
	2,5 kg	Weight

Main Dimensions & Performance Data

d	220 mm	Bore diameter
D	270 mm	Outside diameter
B	24 mm	Width
C_r	78.000 N	Basic dynamic load rating, radial
C_{0r}	97.000 N	Basic static load rating, radial
C_{ur}	3.650 N	Fatigue load limit, radial
n_G	3.200 1/min	Limiting speed
n_{gr}	2.320 1/min	Reference speed

Dimensions

r_{\min}	1,5 mm	Minimum chamfer dimension
D_1	255 mm	Shoulder diameter outer ring
d_1	235,9 mm	Shoulder diameter inner ring

Mounting dimensions

$d_{a\min}$	227 mm	Minimum diameter shaft shoulder
$D_{a\max}$	263 mm	Maximum diameter of housing shoulder
$r_{a\max}$	1,5 mm	Maximum fillet radius

Calculation factors

f_0	15,8	Calculation factor
-------	------	--------------------