



FAG

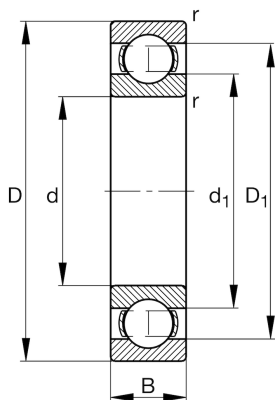
★ 6213

Deep groove ball bearing

Schaeffler ID:
0167210390000Deep groove ball bearing 62, single row,
steel sheet metal cage

★ Preferred product

Technical information



Temperature range

T_{\min}	-30 °C	Operating temperature min.
T_{\max}	150 °C	Operating temperature max.
	0,95 kg	Weight

Main Dimensions & Performance Data

d	65 mm	Bore diameter
D	120 mm	Outside diameter
B	23 mm	Width
C_r	63.000 N	Basic dynamic load rating, radial
C_{0r}	41.500 N	Basic static load rating, radial
C_{ur}	2.130 N	Fatigue load limit, radial
n_G	7.800 1/min	Limiting speed
n_{gr}	6.300 1/min	Reference speed

Dimensions

r_{\min}	1,5 mm	Minimum chamfer dimension
D_1	103,2 mm	Shoulder diameter outer ring
d_1	82,3 mm	Shoulder diameter inner ring

Mounting dimensions

$d_{a\min}$	74 mm	Minimum diameter shaft shoulder
$D_{a\max}$	111 mm	Maximum diameter of housing shoulder
$r_{a\max}$	1,5 mm	Maximum fillet radius

Calculation factors

f_0	14,4	Calculation factor
-------	------	--------------------