

FAG

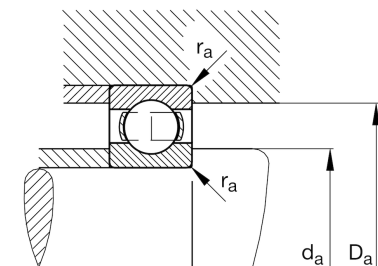
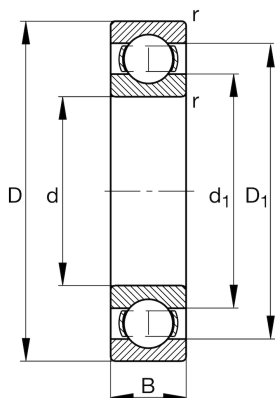
## ★ 6214

## Deep groove ball bearing

Schaeffler ID:  
0167211520000Deep groove ball bearing 62, single row,  
steel sheet metal cage

★ Preferred product

## Technical information



## Temperature range

$T_{\min}$	-30 °C	Operating temperature min.
$T_{\max}$	150 °C	Operating temperature max.
	1,05 kg	Weight

## Main Dimensions &amp; Performance Data

d	70 mm	Bore diameter
D	125 mm	Outside diameter
B	24 mm	Width
$C_r$	66.000 N	Basic dynamic load rating, radial
$C_{0r}$	44.000 N	Basic static load rating, radial
$C_{ur}$	2.260 N	Fatigue load limit, radial
$n_G$	7.400 1/min	Limiting speed
$n_{gr}$	6.100 1/min	Reference speed

## Dimensions

$r_{\min}$	1,5 mm	Minimum chamfer dimension
$D_1$	108,2 mm	Shoulder diameter outer ring
$d_1$	86,8 mm	Shoulder diameter inner ring

## Mounting dimensions

$d_{a\min}$	79 mm	Minimum diameter shaft shoulder
$D_{a\max}$	116 mm	Maximum diameter of housing shoulder
$r_{a\max}$	1,5 mm	Maximum fillet radius

## Calculation factors

$f_0$	14,4	Calculation factor
-------	------	--------------------