



FAG

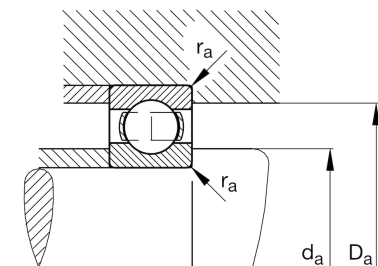
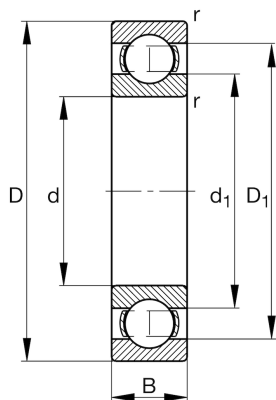
★ 6216

Deep groove ball bearing

Schaeffler ID:
0167213650000Deep groove ball bearing 62, single row,
steel sheet metal cage

★ Preferred product

Technical information



Temperature range

T_{\min}	-30 °C	Operating temperature min.
T_{\max}	150 °C	Operating temperature max.
	1,432 kg	Weight

Main Dimensions & Performance Data

d	80 mm	Bore diameter
D	140 mm	Outside diameter
B	26 mm	Width
C_r	77.000 N	Basic dynamic load rating, radial
C_{0r}	55.000 N	Basic static load rating, radial
C_{ur}	3.650 N	Fatigue load limit, radial
n_G	7.300 1/min	Limiting speed
n_{gr}	5.500 1/min	Reference speed

Dimensions

r_{\min}	2 mm	Minimum chamfer dimension
D_1	121,5 mm	Shoulder diameter outer ring
d_1	98,8 mm	Shoulder diameter inner ring

Mounting dimensions

$d_{a\min}$	91 mm	Minimum diameter shaft shoulder
$D_{a\max}$	129 mm	Maximum diameter of housing shoulder
$r_{a\max}$	2 mm	Maximum fillet radius

Calculation factors

f_0	15	Calculation factor
-------	----	--------------------