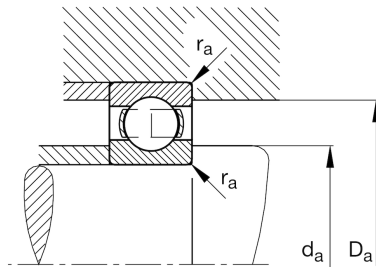
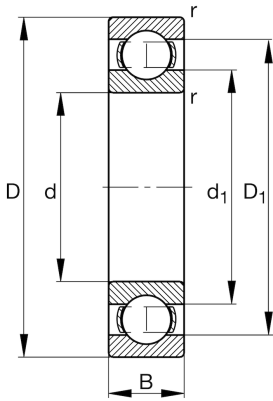
**FAG**★ **6220**

Deep groove ball bearing

Schaeffler ID:
0167216670000Deep groove ball bearing 62, single row,
steel sheet metal cage

★ Preferred product

Technical information



Temperature range

T_{\min}	-30 °C	Operating temperature min.
T_{\max}	150 °C	Operating temperature max.
	3,12 kg	Weight

Main Dimensions & Performance Data

d	100 mm	Bore diameter
D	180 mm	Outside diameter
B	34 mm	Width
C_r	130.000 N	Basic dynamic load rating, radial
C_{0r}	93.000 N	Basic static load rating, radial
C_{ur}	5.500 N	Fatigue load limit, radial
n_G	5.000 1/min	Limiting speed
n_{gr}	4.800 1/min	Reference speed

Dimensions

r_{\min}	2,1 mm	Minimum chamfer dimension
D_1	155,5 mm	Shoulder diameter outer ring
d_1	125,1 mm	Shoulder diameter inner ring

Mounting dimensions

$d_{a \min}$	112 mm	Minimum diameter shaft shoulder
$D_{a \max}$	168 mm	Maximum diameter of housing shoulder
$r_{a \max}$	2,1 mm	Maximum fillet radius

Calculation factors

f_0	14,4	Calculation factor
-------	------	--------------------