



FAG

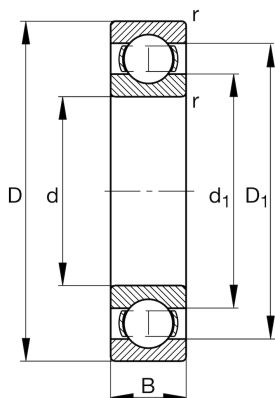
★ 6228

Deep groove ball bearing

Schaeffler ID:
0167219930000Deep groove ball bearing 62, single row,
steel sheet metal cage

★ Preferred product

Technical information



Temperature range

T_{\min}	-30 °C	Operating temperature min.
T_{\max}	200 °C	Operating temperature max.
	8,07 kg	Weight

Main Dimensions & Performance Data

d	140 mm	Bore diameter
D	250 mm	Outside diameter
B	42 mm	Width
C_r	188.000 N	Basic dynamic load rating, radial
C_{0r}	165.000 N	Basic static load rating, radial
C_{ur}	8.400 N	Fatigue load limit, radial
n_G	3.600 1/min	Limiting speed
n_{gr}	3.600 1/min	Reference speed

Dimensions

r_{\min}	3 mm	Minimum chamfer dimension
D_1	213,8 mm	Shoulder diameter outer ring
d_1	175,9 mm	Shoulder diameter inner ring

Mounting dimensions

$d_{a\min}$	154 mm	Minimum diameter shaft shoulder
$D_{a\max}$	236 mm	Maximum diameter of housing shoulder
$r_{a\max}$	2,5 mm	Maximum fillet radius

Calculation factors

f_0	14,9	Calculation factor
-------	------	--------------------