

FAG

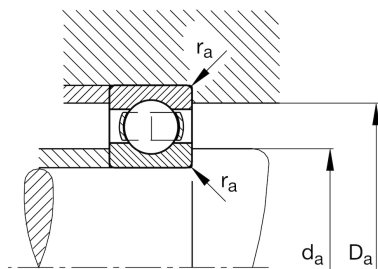
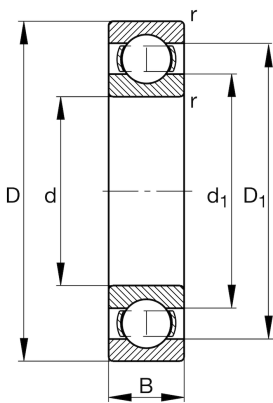
★ 6230-M

Deep groove ball bearing

Schaeffler ID:
0191065050000Deep groove ball bearing 62...-M, single
row, solid brass cage

★ Preferred product

Technical information



Temperature range

T_{\min}	-30 °C	Operating temperature min.
T_{\max}	200 °C	Operating temperature max.
	11,45 kg	Weight

Main Dimensions & Performance Data

d	150 mm	Bore diameter
D	270 mm	Outside diameter
B	45 mm	Width
C_r	187.000 N	Basic dynamic load rating, radial
C_{0r}	168.000 N	Basic static load rating, radial
C_{ur}	8.100 N	Fatigue load limit, radial
n_G	4.350 1/min	Limiting speed
n_{gr}	3.350 1/min	Reference speed

Dimensions

r_{\min}	3 mm	Minimum chamfer dimension
D_1	229,8 mm	Shoulder diameter outer ring
d_1	191,6 mm	Shoulder diameter inner ring

Mounting dimensions

$d_{a\min}$	164 mm	Minimum diameter shaft shoulder
$D_{a\max}$	256 mm	Maximum diameter of housing shoulder
$r_{a\max}$	2,5 mm	Maximum fillet radius

Calculation factors

f_0	15,2	Calculation factor
-------	------	--------------------