



FAG

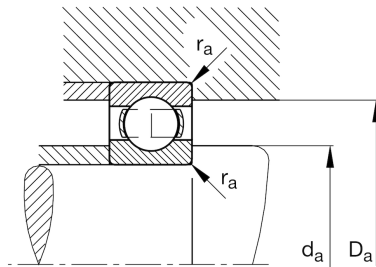
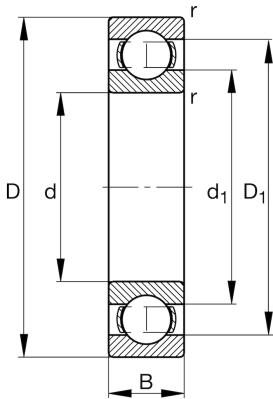
★ 625

Deep groove ball bearing

Schaeffler ID:
0383909060000Deep groove ball bearing 62, single row,
steel sheet metal cage

★ Preferred product

Technical information



Temperature range

T_{\min}	-30 °C	Operating temperature min.
T_{\max}	120 °C	Operating temperature max.
	0,004 kg	Weight

Main Dimensions & Performance Data

d	5 mm	Bore diameter
D	16 mm	Outside diameter
B	5 mm	Width
C_r	1.500 N	Basic dynamic load rating, radial
C_{0r}	750 N	Basic static load rating, radial
C_{ur}	29 N	Fatigue load limit, radial
n_G	66.000 1/min	Limiting speed
n_{gr}	37.500 1/min	Reference speed

Dimensions

r_{\min}	0,3 mm	Minimum chamfer dimension
D_1	12,5 mm	Shoulder diameter outer ring
d_1	8,55 mm	Shoulder diameter inner ring

Mounting dimensions

$d_{a\min}$	7,4 mm	Minimum diameter shaft shoulder
$D_{a\max}$	13,6 mm	Maximum diameter of housing shoulder
$r_{a\max}$	0,3 mm	Maximum fillet radius

Calculation factors

f_0	16,5	Calculation factor
-------	------	--------------------