

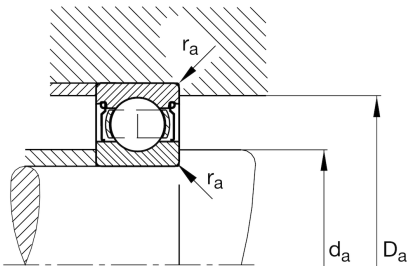
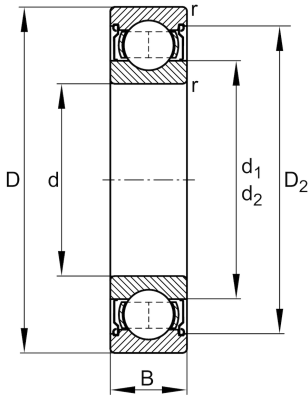
**FAG**★ **6215-2Z**

Deep groove ball bearing

Schaeffler ID:  
0167212840000Deep groove ball bearing 62...-2Z, single  
row, shields, steel sheet metal cage

★ Preferred product

## Technical information

**Temperature range**

$T_{\min}$	-20 °C	Operating temperature min.
$T_{\max}$	120 °C	Operating temperature max.
	1,21 kg	Weight

**Main Dimensions & Performance Data**

d	75 mm	Bore diameter
D	130 mm	Outside diameter
B	25 mm	Width
$C_r$	70.000 N	Basic dynamic load rating, radial
$C_{0r}$	49.000 N	Basic static load rating, radial
$C_{ur}$	3.300 N	Fatigue load limit, radial
$n_G$	6.600 1/min	Limiting speed
$n_{gr}$	5.900 1/min	Reference speed

**Dimensions**

$r_{\min}$	1,5 mm	Minimum chamfer dimension
$D_2$	115,5 mm	Caliber diameter outer ring
$d_1$	92,1 mm	Shoulder diameter inner ring

**Mounting dimensions**

$d_{a \min}$	84 mm	Minimum diameter shaft shoulder
$D_{a \max}$	121 mm	Maximum diameter of housing shoulder
$r_{a \max}$	1,5 mm	Maximum fillet radius

**Calculation factors**

$f_0$	14,6	Calculation factor
-------	------	--------------------