

FAG

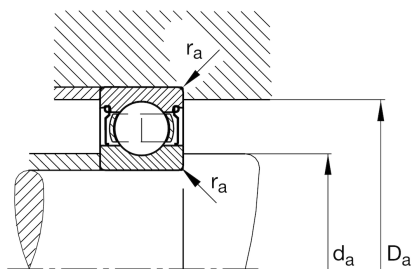
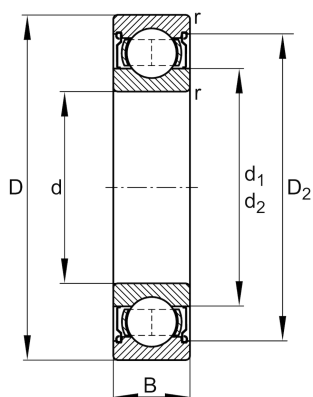
## ★ 6216-2Z

Deep groove ball bearing

Schaeffler ID:  
0167213900000Deep groove ball bearing 62...-2Z, single  
row, shields, steel sheet metal cage

★ Preferred product

## Technical information



## Temperature range

$T_{\min}$	-20 °C	Operating temperature min.
$T_{\max}$	120 °C	Operating temperature max.
	1,49 kg	Weight

## Main Dimensions &amp; Performance Data

d	80 mm	Bore diameter
D	140 mm	Outside diameter
B	26 mm	Width
$C_r$	77.000 N	Basic dynamic load rating, radial
$C_{0r}$	55.000 N	Basic static load rating, radial
$C_{ur}$	3.650 N	Fatigue load limit, radial
$n_G$	6.200 1/min	Limiting speed
$n_{gr}$	5.500 1/min	Reference speed

## Dimensions

$r_{\min}$	2 mm	Minimum chamfer dimension
$D_2$	124,4 mm	Caliber diameter outer ring
$d_1$	98,5 mm	Shoulder diameter inner ring

## Mounting dimensions

$d_{a\min}$	91 mm	Minimum diameter shaft shoulder
$D_{a\max}$	129 mm	Maximum diameter of housing shoulder
$r_{a\max}$	2 mm	Maximum fillet radius

## Calculation factors

$f_0$	15	Calculation factor
-------	----	--------------------