**FAG**★ **6218-2Z**

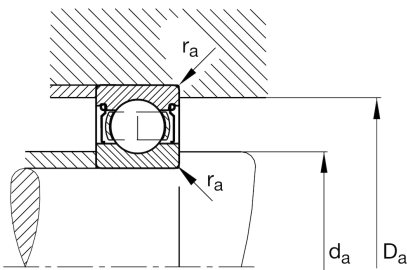
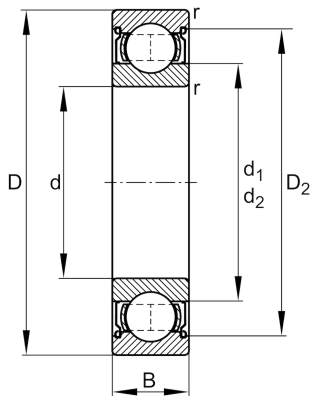
Deep groove ball bearing

Schaeffler ID:
0167215350000

Deep groove ball bearing 62...-2Z, single row, shields, steel sheet metal cage

★ Preferred product

Technical information

**Temperature range**

T_{\min}	-20 °C	Operating temperature min.
T_{\max}	120 °C	Operating temperature max.
	2,136 kg	Weight

Main Dimensions & Performance Data

d	90 mm	Bore diameter
D	160 mm	Outside diameter
B	30 mm	Width
C_r	102.000 N	Basic dynamic load rating, radial
C_{0r}	74.000 N	Basic static load rating, radial
C_{ur}	4.500 N	Fatigue load limit, radial
n_G	5.400 1/min	Limiting speed
n_{gr}	5.100 1/min	Reference speed

Dimensions

r_{\min}	2 mm	Minimum chamfer dimension
D_2	143,4 mm	Caliber diameter outer ring
d_1	112,3 mm	Shoulder diameter inner ring

Mounting dimensions

$d_{a\min}$	101 mm	Minimum diameter shaft shoulder
$D_{a\max}$	149 mm	Maximum diameter of housing shoulder
$r_{a\max}$	2 mm	Maximum fillet radius

Calculation factors

f_0	14,6	Calculation factor
-------	------	--------------------