

FAG

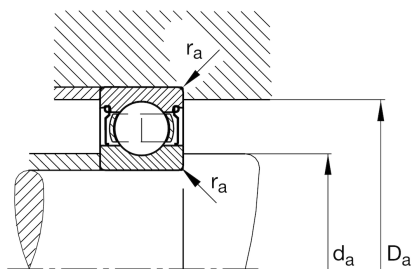
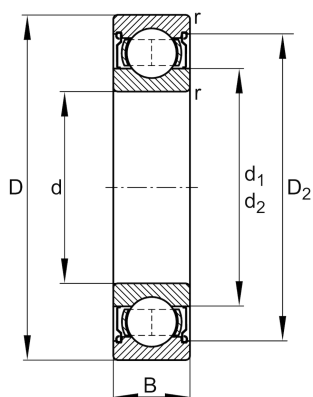
★ 6222-2Z

Deep groove ball bearing

Schaeffler ID:
0167218960000Deep groove ball bearing 62...-2Z, single
row, shields, steel sheet metal cage

★ Preferred product

Technical information



Temperature range

T_{\min}	-20 °C	Operating temperature min.
T_{\max}	120 °C	Operating temperature max.
	4,345 kg	Weight

Main Dimensions & Performance Data

d	110 mm	Bore diameter
D	200 mm	Outside diameter
B	38 mm	Width
C_r	153.000 N	Basic dynamic load rating, radial
C_{0r}	117.000 N	Basic static load rating, radial
C_{ur}	6.500 N	Fatigue load limit, radial
n_G	3.800 1/min	Limiting speed
n_{gr}	4.500 1/min	Reference speed

Dimensions

r_{\min}	2,1 mm	Minimum chamfer dimension
D_2	177,2 mm	Caliber diameter outer ring
d_1	138 mm	Shoulder diameter inner ring

Mounting dimensions

$d_{a\min}$	122 mm	Minimum diameter shaft shoulder
$D_{a\max}$	188 mm	Maximum diameter of housing shoulder
$r_{a\max}$	2,1 mm	Maximum fillet radius

Calculation factors

f_0	14,3	Calculation factor
-------	------	--------------------