

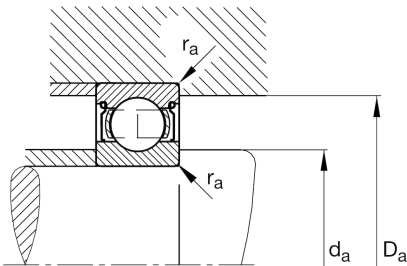
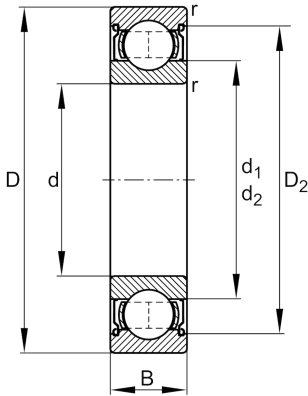
**FAG**★ **625-2Z**

Deep groove ball bearing

Schaeffler ID:  
0383909140000Deep groove ball bearing 62...-2Z, single  
row, shields, steel sheet metal cage

★ Preferred product

## Technical information

**Temperature range**

$T_{\min}$	-30 °C	Operating temperature min.
$T_{\max}$	120 °C	Operating temperature max.
	0,005 kg	Weight

**Main Dimensions & Performance Data**

d	5 mm	Bore diameter
D	16 mm	Outside diameter
B	5 mm	Width
$C_r$	1.560 N	Basic dynamic load rating, radial
$C_{0r}$	600 N	Basic static load rating, radial
$C_{ur}$	25,5 N	Fatigue load limit, radial
$n_G$	55.000 1/min	Limiting speed
$n_{gr}$	36.500 1/min	Reference speed

**Dimensions**

$r_{\min}$	0,3 mm	Minimum chamfer dimension
$D_2$	13,8 mm	Caliber diameter outer ring
$d_2$	7,5 mm	Caliber diameter inner ring

**Mounting dimensions**

$d_{a \min}$	7,4 mm	Minimum diameter shaft shoulder
$D_{a \max}$	13,6 mm	Maximum diameter of housing shoulder
$r_{a \max}$	0,3 mm	Maximum fillet radius

**Calculation factors**

$f_0$	15,1	Calculation factor
-------	------	--------------------